

PUBLIC RIGHTS OF WAY ADA TRANSITION PLAN

CITY OF INTERNATIONAL FALLS, MINNESOTA

City of International Falls Council Acceptance Date: Month DD, YYYY



Prepared by



WidethSmithNolting.com

TABLE OF CONTENTS

Table of Contents.....	1
EXECUTIVE SUMMARY	4
Transition Plan Need and Purpose.....	4
Schedule.....	5
ADA Coordinator	5
Implementation Schedule.....	5
Methodology.....	5
Grievance Procedure	5
Progress Monitoring	5
Self-Evaluation Results.....	6
Schedule / Budget Information.....	6
Cost Information	6
Unit Prices	6
Improvement Cost	6
Entire Jurisdiction.....	6
Contact Information.....	7
ADA Title II Coordinator	7
Public Right of Ways ADA Implementation Coordinator	7
Introduction	7
Transition Plan Need and Purpose.....	7
ADA and its Relationship to Other Laws	7
Agency Requirements	8
ADA Requirements.....	8
Pedestrian Routes	8
Curb Ramps	10
Pedestrian Traffic Signals	11
Self-Evaluation	12
Overview	12
Summary	13
Policies and Practices.....	13

Previous Practices 13

Policy 13

Improvement Schedule..... 14

 Priority Areas 14

 External Agency Coordination 14

 Schedule..... 14

ADA Coordinator 14

Implementation Schedule..... 14

 Methodology..... 14

Public Outreach..... 14

Grievance Procedure 15

Progress Monitoring 15

Appendices..... 16

 A. Self-Evaluation Results..... 16

 B. Schedule / Budget Information..... 16

 C. Public Outreach..... 16

 D. Grievance Procedure..... 16

 E. Contact Information..... 16

 F. Agency ADA Design Standards and Procedures..... 16

 G. Glossary of Terms..... 16

 H. Maps..... 16

Appendix A – Self-Evaluation Results 17

 Sidewalks..... 17

 Curb Ramps 28

 Pedestrian Signals 46

Appendix B – Schedule / Budget Information 47

 Cost Information 47

 Unit Prices 47

 Improvement Cost 47

 Entire Jurisdiction..... 47

Appendix C – Public Outreach..... 48

Appendix D – Grievance Procedure 49

 Public Notice 49

Appendix E – Contact Information..... 52

 ADA Title II Coordinator 52

 Public Right of Ways ADA Implementation Coordinator 52

Appendix F – Agency ADA Design Standards and Procedures..... 53

 Design Procedures 53

 Intersection Corners 53

 Sidewalks / Trails..... 53

 Traffic Control Signals 53

 Other policies, practices and programs 53

 Design Standards 53

Appendix G – Glossary of Terms 54

EXECUTIVE SUMMARY

This document has been created to specifically cover accessibility within the public rights of way and does not include information on City programs, practices, or building facilities not related to public rights of way.

TRANSITION PLAN NEED AND PURPOSE

The Federal Highway Administration (FHWA) has enacted a requirement that all local agencies with greater than 50 employees or who are slated to receive federal funding included in the 2019-2022 Transportation Improvement Plan (TIP) must develop and adopt an ADA Transition Plan or be substantially working towards completion of the plan. If the local agency does not have their Transition Plan completed or in progress, the agency risks losing federal funding for transportation projects.

Each agency is required to complete a self-evaluation/survey of its facilities, policies and practices as it relates to the requirements set forth in The Americans with Disabilities Act (ADA). Repair or replacement of deficient facilities must be noted and addressed in a formal transition plan.

In September of 2019, the City of International Falls conducted an inventory of pedestrian facilities within its public right of way consisting of the evaluation of the following facilities:

- 29.6 miles of sidewalks/trails
- 680 curb ramps
- 24 traffic control signals (by leg)

The City evaluated their facilities on a 1-4 rating system to separate out various severities of non-compliance allowing the City to better prioritize pedestrian facilities replacement.

1. Excellent condition, fully compliant
2. Good condition and/or few criteria non-compliant
3. Fair condition and/or some criteria non-compliant
4. Poor condition and/or many criteria non-compliant

Requests for accessibility improvements can be submitted to the City Engineer.

The City of International Falls has identified general areas for planned accessibility improvement projects. These areas include roads in proximity to specific land uses such as schools, businesses, senior living and healthcare facilities, and higher volume roadways.

Other agencies are responsible for pedestrian facilities within the jurisdiction of the City. The City will coordinate with those agencies to track and assist in the facilitation of the elimination of accessibility barriers along their routes.

SCHEDULE

The City has set the following schedule goals for improving the accessibility of its pedestrian facilities within the City jurisdiction:

- After 10 years, not less than 25% of accessibility features within the jurisdiction of The City of International Falls would be ADA compliant.
- After 20 years, not less than 50% of accessibility features within the jurisdiction of The City of International Falls would be ADA compliant.

ADA COORDINATOR

The City has identified an ADA Title II Coordinator to oversee the City policies and procedures. See the Appendix E – Contact Information.

IMPLEMENTATION SCHEDULE

METHODOLOGY

The City will utilize two methods for upgrading pedestrian facilities to the current ADA standards. The first and most comprehensive of the two methods are the scheduled street and utility improvement projects. All pedestrian facilities impacted by these projects will be upgraded to current ADA accessibility standards. The second method is the stand alone sidewalk and ADA accessibility improvement projects. These projects will be incorporated into the Capital Improvement Program (CIP) on a case by case basis as determined by the City.

GRIEVANCE PROCEDURE

If users of the City facilities and services believe the City has not provided reasonable accommodation, they have the right to file a grievance.

The City has developed a grievance procedure for the purpose of the prompt and equitable resolution of citizens' complaints, concerns, comments, and other grievances. This grievance procedure is outlined in Appendix D.

PROGRESS MONITORING

The City's transition plan is a living document that will receive routine updates. Appendices will be updated annually to reflect the year's completed projects. Self-evaluation will be performed every five years to ensure facilities are compliant with the current standards. This document will be reviewed annually as part of the CIP process and updated as needed. This Transition Plan is available to the public continually through the City's website.

SELF-EVALUATION RESULTS

This initial self-evaluation of pedestrian facilities yielded the following results:

- 4% of sidewalks/trails (by length) met accessibility criteria
- 1% of necessary curb ramp locations met accessibility criteria
- 0% of traffic control signals were compliant

SCHEDULE / BUDGET INFORMATION

COST INFORMATION

UNIT PRICES

Construction costs for upgrading facilities can vary depending on each individual improvement and conditions of each site. Costs can also vary on the type and size of project the improvements are associated with. Listed below are representative 2018 costs for some typical accessibility improvements based on if the improvements are included as part of a retrofit type project, or as part of a larger comprehensive capital improvement project.

Intersection corner ADA improvement retrofit: +/- \$4,000 per ramp

Traffic control signal APS upgrade retrofit: +/- \$ 10,000 per signal leg

Sidewalk / Trail ADA improvement retrofit: +/- \$10.00 per SF

IMPROVEMENT COST

Reconstruct 675 pedestrian ramps:	\$2,700,000
Traffic control signal APS upgrades (only 8 of which are City's):	\$240,000
Sidewalk / Trail ADA improvement retrofit (SF):	\$8,495,992
Total:	\$11,435,992

ENTIRE JURISDICTION

Based on the results of the self-evaluation, the estimated costs associated with providing ADA accessibility within the entire jurisdiction is \$11,435,992 regardless of responsible authority. This amount signifies a significant investment that the City of International Falls is committed to making in the upcoming years with the assistance of other responsible agencies where applicable. A systematic approach to providing accessibility will be taken in order to absorb the cost into the City budget for improvements to the public right of way.

CONTACT INFORMATION

ADA TITLE II COORDINATOR

Job Title: City Administrator

See link below for contact information.

<https://www.ci.international-falls.mn.us/resources/staff-directory/>

PUBLIC RIGHT OF WAYS ADA IMPLEMENTATION COORDINATOR

Job Title: Public Works Director

See link below for contact information.

<https://www.ci.international-falls.mn.us/resources/staff-directory/>

INTRODUCTION

TRANSITION PLAN NEED AND PURPOSE

The Americans with Disabilities Act (ADA), enacted on July 26, 1990, is a civil rights law prohibiting discrimination against individuals on the basis of disability. ADA consists of five titles outlining protections in the following areas:

1. Employment
2. State and local government services
3. Public accommodations
4. Telecommunications
5. Miscellaneous Provisions

Title II of ADA pertains to the programs, activities and services public entities provide. As a provider of public transportation services and programs, The City of International Falls must comply with this section of the Act as it specifically applies to public service agencies. Title II of ADA provides that, "...no qualified individual with a disability shall, by reason of such disability, be excluded from participation in or be denied the benefits of the services, programs, or activities of a public entity, or be subjected to discrimination by any such entity." ([42 USC. Sec. 12132](#); [28 CFR. Sec. 35.130](#))

As required by Title II of [ADA, 28 CFR. Part 35 Sec. 35.105 and Sec. 35.150](#), The City of International Falls has conducted a self-evaluation of its facilities within public rights of way and has developed this Transition Plan detailing how the organization will ensure that all of those facilities are accessible to all individuals. This document serves as a supplement to the City's existing Transition Plan covering buildings, services, programs and activities.

ADA AND ITS RELATIONSHIP TO OTHER LAWS

Title II of ADA is companion legislation to two previous federal statutes and regulations: the [Architectural Barriers Acts of 1968](#) and [Section 504 of the Rehabilitation Act](#) of 1973.

The Architectural Barriers Act of 1968 is a Federal law that requires facilities designed, built, altered or leased with Federal funds to be accessible. The Architectural Barriers Act marks one of the first efforts to ensure access to the built environment.

Section 504 of the Rehabilitation Act of 1973 is a Federal law that protects qualified individuals from discrimination based on their disability. The nondiscrimination requirements of the law apply to employers and organizations that receive financial assistance from any Federal department or City. Title II of ADA extended this coverage to all state and local government entities, regardless of whether they receive federal funding or not.

AGENCY REQUIREMENTS

Under Title II, The City of International Falls must meet these general requirements:

- Must operate their programs so that, when viewed in their entirety, the programs are accessible to and useable by individuals with disabilities ([28 C.F.R. Sec. 35.150](#)).
- May not refuse to allow a person with a disability to participate in a service, program or activity simply because the person has a disability ([28 C.F.R. Sec. 35.130 \(a\)](#)).
- Must make reasonable modifications in policies, practices and procedures that deny equal access to individuals with disabilities unless a fundamental alteration in the program would result ([28 C.F.R. Sec. 35.130\(b\) \(7\)](#)).
- May not provide services or benefits to individuals with disabilities through programs that are separate or different unless the separate or different measures are necessary to ensure that benefits and services are equally effective ([28 C.F.R. Sec. 35.130\(b\)\(iv\) & \(d\)](#)).
- Must take appropriate steps to ensure that communications with applicants, participants and members of the public with disabilities are as effective as communications with others ([29 C.F.R. Sec. 35.160\(a\)](#)).
- Must designate at least one responsible employee to coordinate ADA compliance [[28 CFR Sec. 35.107\(a\)](#)]. This person is often referred to as the "ADA Coordinator." The public entity must provide the ADA coordinator's name, office address, and telephone number to all interested individuals [[28 CFR Sec. 35.107\(a\)](#)].
- Must provide notice of ADA requirements. All public entities, regardless of size, must provide information about the rights and protections of Title II to applicants, participants, beneficiaries, employees, and other interested persons [[28 CFR Sec. 35,106](#)]. The notice must include the identification of the employee serving as the ADA coordinator and must provide this information on an ongoing basis [[28 CFR Sec. 104.8\(a\)](#)].
- Must establish a grievance procedure. Public entities must adopt and publish grievance procedures providing for prompt and equitable resolution of complaints [[28 CFR Sec. 35.107\(b\)](#)]. This requirement provides for a timely resolution of all problems or conflicts related to ADA compliance before they escalate to litigation and/or the federal complaint process.

ADA REQUIREMENTS

According to the 2010 ADA Standards for Accessible Design and the 2011 Proposed Guidelines for Pedestrian Facilities in the Public Right-of-Way (PROWAG) the following key design elements are required:

PEDESTRIAN ROUTES

- Access ways must be continuous with interconnected walkways, sidewalks, curb ramps, landings and crosswalks.
- Routes shall be firm, stable and slip resistant.

- Access ways shall have a 48" minimum clear width.
- If there is less than 5 feet clear width, there must be passing spaces dimensioned 5 feet by 5 feet minimum at least every 200 feet.
- Maximum 5% running slope (parallel to direction of travel) and 2% cross slope (perpendicular to direction of travel).
- Vertical discontinuities must be no more than ¼ inch.
- Horizontal openings in gratings and joints shall not permit passage of a sphere more than 13 mm (0.5 in) in diameter.
- Elongated openings in gratings shall be placed so that the long dimension is perpendicular to the dominant direction of travel.



FIGURE 1 NON COMPLIANT SIDEWALK IN INTERNATIONAL FALLS

CURB RAMPS

- Generally, curb ramps must be provided wherever a sidewalk or other pedestrian walkway crosses a curb.
- The ramp has the least running slope possible but must be 8.33% or less.
- The cross slope may not exceed 2%.
- The ramp must be at least 48 inches wide, not including the flared sides.
- The ramp must have detectable warnings at least 24 inches deep that extend the full width of the ramp.
 - Detectable warnings consist of a series of small domes that contrast in color with the surrounding sidewalk or street.
- Transitions from the ramp to the walkway, gutter and street must be flush and free of abrupt changes.
- Grade breaks at the top and bottom of curb ramp runs shall be perpendicular to the direction of the ramp run. Grade breaks shall not be permitted on the surface of ramp runs and turning spaces. Surface slopes that meet at grade breaks shall be flush.
- The gutter must have a slope of no more than 5 percent toward the ramp.
- Landing dimensions must be a minimum of 4 feet by 4 feet.
- Gratings, access covers, and other appurtenances shall not be located on curb ramps, landings or gutters.



FIGURE 2 NON COMPLIANT CURB RAMP IN INTERNATIONAL FALLS

PEDESTRIAN TRAFFIC SIGNALS

- Clear path must be at least 36 inches wide
- Push button mounting height is to be at least 15 inches and up to 48 inches
- Pedestrian push buttons must be located less than 5 feet from the crosswalk line that is farthest from the intersection
- Pedestrian push buttons must be between 1.5 and 10 feet from the edge of curb, shoulder, or pavement
- Accessible pedestrian signals (APS) shall face the intersection and be parallel to the crosswalk served
- Push buttons shall have locator tones for the DON'T WALK interval
- There must be audible indications during the WALK interval

- Refer to Part 4 of the Minnesota Manual of Uniform Traffic Control Devices (MnMUTCD) for complete details



FIGURE 3 NON COMPLIANT APS IN INTERNATIONAL FALLS

SELF-EVALUATION

OVERVIEW

The City of International Falls is required, under Title II of the Americans with Disabilities Act (ADA) and 28CFR35.105, to perform a self-evaluation of its current transportation infrastructure policies, practices, and programs. This self-evaluation will identify what policies and practices impact accessibility and examine how the City implements these policies. The goal of the self-evaluation is to verify that, in implementing the City's policies and practices, the department is providing accessibility and not adversely affecting the full participation of individuals with disabilities.

The self-evaluation also examines the condition of the City's Pedestrian Circulation Route/Pedestrian Access Route (PCR/PAR) and identifies potential need for PCR/PAR infrastructure improvements. This will include the sidewalks, curb ramps, bicycle/pedestrian trails, traffic control signals and transit facilities that are located within the City rights of way. Any barriers to accessibility identified in the self-evaluation and the remedy to the identified barrier are set out in this transition plan.

SUMMARY

In September 2019, The City of International Falls conducted an inventory of pedestrian facilities within its public right of way consisting of the evaluation of the following facilities:

- 29.6 miles of sidewalks/trails
- 680 curb ramps
- 24 traffic control signals (by leg)

A detailed evaluation on how these facilities relate to ADA standards is found in Appendix A and will be updated periodically.

POLICIES AND PRACTICES

PREVIOUS PRACTICES

Since the adoption of the ADA, The City of International Falls has striven to provide accessible pedestrian features as part of the City's capital improvement projects. As additional information was made available as to the methods of providing accessible pedestrian features, the City updated their procedures to accommodate these methods.

POLICY

International Fall's goal is to continue to provide accessible pedestrian design features as part of the City capital improvement projects. The City has established ADA design standards and procedures as listed in Appendix F. These standards and procedures will be kept up to date with nationwide and local best management practices.

The City will consider and respond to all accessibility improvement requests. All accessibility improvements that have been deemed reasonable will be scheduled consistent with transportation priorities. The City will coordinate with external agencies to ensure that all new or altered pedestrian facilities within the City jurisdiction are ADA compliant to the maximum extent feasible.

Maintenance of pedestrian facilities within the public right of way will continue to follow the policies set forth by the City. Maintenance of pedestrian facilities is completed on an as needed basis. Snow removal is the responsibility of City residents with sidewalk adjacent to their property.

Requests for accessibility improvements can be submitted to the Public Works Director. Contact information for the Public Works Director is located in Appendix E.

IMPROVEMENT SCHEDULE

PRIORITY AREAS

The City of International Falls has identified general areas for planned accessibility improvement projects. These areas include roads in proximity to specific land uses such as schools, businesses, senior living and healthcare facilities, and higher volume roadways.

EXTERNAL AGENCY COORDINATION

Other agencies are responsible for pedestrian facilities within the jurisdiction of the City. The City will coordinate with those agencies to track and assist in the facilitation of the elimination of accessibility barriers along their routes.

SCHEDULE

The City of International Falls has set the following schedule goals for improving the accessibility of its pedestrian facilities within the City jurisdiction:

- After 10 years, not less than 25% of accessibility features within the jurisdiction of The City of International Falls would be ADA compliant.
- After 20 years, not less than 50% of accessibility features within the jurisdiction of The City of International Falls would be ADA compliant.

ADA COORDINATOR

In accordance with 28 CFR 35.107(a), the City has identified an ADA Title II Coordinator to oversee the City policies and procedures. Contact information for this individual is located in Appendix E.

IMPLEMENTATION SCHEDULE

METHODOLOGY

The City of International Falls will utilize two methods for upgrading pedestrian facilities to the current ADA standards. The first and most comprehensive of the two methods are the scheduled street and utility improvement projects. All pedestrian facilities impacted by these projects will be upgraded to current ADA accessibility standards. The second method is the stand alone sidewalk and ADA accessibility improvement project. These projects will be incorporated into the Capital Improvement Program (CIP) on a case by case basis as determined by City staff.

PUBLIC OUTREACH

The City of International Falls recognizes that public participation is an important component in the development of this document. Input from the community has been gathered and used to help define priority areas for improvements within the jurisdiction of The City of International Falls.

Public outreach for the creation of this document will consist of the following activities:

A notice stating the availability of this report and requesting public comment was published in the local newspaper as well as posted on the City website.

This document was made available for public comment. A summary of comments received and detailed information regarding the public outreach activities are to be located in Appendix C.

GRIEVANCE PROCEDURE

Under the Americans with Disabilities Act, each agency is required to publish its responsibilities in regards to the ADA. A draft of this public notice is provided in Appendix D. If users of The City of International Falls facilities and services believe the City has not provided reasonable accommodation, they have the right to file a grievance.

In accordance with 28 CFR 35.107(b), the City has developed a grievance procedure for the purpose of the prompt and equitable resolution of citizens' complaints, concerns, comments, and other grievances. This grievance procedure is outlined in Appendix D.

PROGRESS MONITORING

The City's transition plan is a living document that will receive routine updates. Appendices will be updated annually to reflect the year's completed projects. Self-evaluation will be performed every five years to ensure facilities are compliant with the current standards. This document will be reviewed annually as part of the CIP process and updated as needed. This Transition Plan is available to the public continually through the City's website.

APPENDICES

- A. SELF-EVALUATION RESULTS
- B. SCHEDULE / BUDGET INFORMATION
- C. PUBLIC OUTREACH
- D. GRIEVANCE PROCEDURE
- E. CONTACT INFORMATION
- F. AGENCY ADA DESIGN STANDARDS AND PROCEDURES
- G. GLOSSARY OF TERMS
- H. MAPS

APPENDIX A – SELF-EVALUATION RESULTS

This initial self-evaluation of pedestrian facilities yielded the following results:

- 4% of sidewalks/trails (by length) met accessibility criteria
- 1% of necessary curb ramp locations met accessibility criteria
- 0% of traffic control signals were compliant

The City evaluated their facilities on a 1-4 rating system to separate out various severities of non-compliance allowing the City to better prioritize pedestrian facilities replacement.

1. Excellent condition, fully compliant
2. Good condition and/or few criteria non-compliant
3. Fair condition and/or some criteria non-compliant
4. Poor condition and/or many criteria non-compliant

SIDEWALKS

UID	Road_Name	To	From	Street Side	Compliance	Cond.	Width FT	Length FT
SW_001	11th st	hwy 71/11	home ln	South	N	2	11	707
SW_002	15th ave	11th st	14th st	East	N	3	6	932
SW_003	11th st	hwy 71/11	school driveway	West	N	3	11	26
SW_004	11th st	home ln	15th ave	West	N	2	4	274
SW_005	Keenan Dr	Highway 11/71	Aspen Way	North	N	2	5	3676
SW_006	Keenan Dr	Aspen Way	Parking Lot	North	N	2	5	509
SW_007	Keenan Dr	Parking Lot	13th Ave	North	N	2	5	310
SW_008	Keenan Dr	13th Ave	11th Ave	North	N	2	5	155
SW_009	hwy 71/11 frontage rd	valley pine circle	shorewood dr	Northwestern	N	2	6	915
SW_010	hwy 71/11 frontage road	shorewood dr	americ inn road	Northwestern	N	2	6	746
SW_011	hwy 71/11 frontage rd		unknown	Northwestern	N	2	6	785
SW_012	hwy 71/11		terrace ln	Northwestern	N	2	6	845
SW_013	hwy 71/11	terrace ln	river view blvd	Northwestern	N	2	6	587
SW_014	hwy 71/11	river view blvd	center st	Northwestern	N	2	6	701
SW_015	hwy 71/11	center st	river view blvd	Northwestern	N	2	6	920
SW_016	3rd st	river view bld	6th st	Northwestern	N	2	4	692
SW_017	3rd st	6th st	12th ave	Northwestern	N	2	6	608
SW_018	12th ave	3rd ave	2nd st	East	N	2	5	373
SW_019	12th ave	1st st	2nd st	West	N	2	6	313
SW_020	riverside dr	12th ave	10th ave	South	N	3	4	372
SW_021	riverside dr	9th ave	10th ave	South	N	2	5	639
SW_022	9th ave	riverside dr	2nd st	East	N	3	6	336
SW_023	9th ave	3rd st	2nd st	East	N	3	5	344

UID	Road_Name	To	From	Street Side	Compliance	Cond.	Width FT	Length FT
SW_024	9th ave	3rd st	4th st	East	N	1	6	420
SW_025	9th ave	4th st	5th st	East	N	2	6	331
SW_026	9th ave	4th st	5th st	West	N	2	6	567
SW_027	3rd st	9th ave	10th ave	North	N	3	6	487
SW_028	3rd st		12th ave	North	N	3	4	725
SW_029	2nd st	10th ave	12th ave	South	N	2	4	572
SW_030	10th ave	3rd st	2nd st	East	N	3	5	347
SW_031	2nd st		12th ave	North	N	2	4	539
SW_032	2nd st	9th ave	10th ave	North	N	2	5	573
SW_033	9th ave	riverside dr	2nd st	West	N	3	6	333
SW_034	10th ave	riverside dr	2nd st	East	N	2	6	330
SW_035	10th ave	2nd st	3rd st	West	N	3	5	328
SW_036	9th ave	3rd st	2nd st	West	N	2	6	352
SW_037	2nd st	9th ave	10th ave	South	N	2	5	555
SW_038	2nd st	9th ave	8th ave	South	N	3	5	566
SW_039	2nd st	9th ave	8th ave	North	N	2	5	575
SW_040	2nd st	8th ave	parking lot	North	N	4	5	81
SW_041	2nd st	parking lot	parking lot	North	N	3	5	295
SW_042	2nd st	8th ave	6th ave w	South	N	3	5	699
SW_043	2nd st	8th ave	6th ave w	North	N	2	5	319
SW_044	6th ave w			North	N	2	8	17
SW_045	6th ave	2nd st	3rd st	West	N	3	6	331
SW_046	3rd st	6th ave w	8th ave	North	N	2	6	684
SW_047	8th ave	2nd st	3rd st	East	N	3	6	315
SW_048	8th ave	2nd st	3rd st	West	N	2	6	327
SW_049	3rd st	8th ave	9th ave	North	N	2	6	390
SW_050	2nd st	3rd ave	pca	North	N	1	11	611
SW_051	2nd st	pca	4th ave	South	N	3	11	189
SW_052	2nd st	3rd ave	4th	North	N	2	11	368
SW_053	4th ave	2nd ave	3rd ave	West	Y	1	11	319
SW_054	3rd st	6th ave w	5th ave	North	N	1	11	337
SW_055	3rd st	5th ave	4th ave	North	N	1	11	326
SW_056	3rd st	5th ave	4th ave	South	N	2	11	332
SW_057	5th ave	4th st	3rd st	East	N	3	12	327
SW_058	4th st	5th ave	4th ave	North	Y	1	12	314
SW_059	4th ave	3rd st	4th st	West	Y	1	11	326
SW_060	4th st	3rd ave	4th ave	North	Y	1	12	313
SW_061	4th ave	3rd st	4th st	East	Y	1	11	323
SW_062	3rd st	3rd ave	4th ave	South	N	2	11	333

UID	Road_Name	To	From	Street Side	Compliance	Cond.	Width FT	Length FT
SW_063	th 53	3rd st	4th st	West	N	3	12	323
SW_064	th 53	3rd st	4th st	East	N	3	12	322
SW_065	4th st	3rd ave	2nd ave	North	N	2	7	303
SW_066	2nd ave	4th st	3rd st	West	N	2	7	323
SW_067	3rd st	2nd ave	3rd ave	South	N	2	11	329
SW_068	3rd st	4th ave	3rd ave w	North	N	1	11	329
SW_069	4th ave	2nd st	3rd st	East	Y	1	11	339
SW_070	3rd ave	3rd st	2nd st	West	N	3	11	330
SW_071	3rd ave	3rd st	2nd st	East	N	3	11	328
SW_072	3rd st	3rd ave	2nd ave	North	N	1	11	327
SW_073	2nd ave	3rd st	2nd st	West	N	2	11	327
SW_074	2nd st	2nd ave	3rd ave	South	N	3	11	322
SW_075	2nd st	3rd ave	4th ave	South	N	2	11	329
SW_076	2nd ave	parking lot	4th st	East	N	2	11	54
SW_077	4th st	private driveway	2nd ave	North	N	2	11	95
SW_078	2nd ave	4th st	5th st	West	N	2	5	312
SW_079	2nd ave	5th st	6th st	West	N	2	5	326
SW_080	6th st	private building parking drive	th 53	North	N	3	11	450
SW_081	th 53	5th st	6th st	East	N	3	11	321
SW_082	th 53	5th st	6th st	West	N	2	6	323
SW_083	7th st	3rd ave	4th ave	North	N	3	5	313
SW_084	4th ave	5th st	6th st	East	N	3	6	312
SW_085	5th st	4th ave	3rd ave	South	N	2	8	307
SW_086	5th st	4th ave	3rd ave	North	N	2	6	312
SW_087	4th ave	4th st	5th stp	East	N	3	6	317
SW_088	4th st	3rd ave	4th ave	South	N	2	6	310
SW_089	th 53	4th st	5th st	West	N	2	11	318
SW_090	4th ave	4th st	5th st	West	N	3	6	354
SW_091	5th st	4th ave	5th ave	North	N	2	6	320
SW_092	5th ave	5th st	4th st	East	N	3	5	335
SW_093	4th st	5th ave	4th ave	South	N	2	12	318
SW_094	5th ave	5th st	4th st	West	N	3	5	343
SW_095	5th st	6th ave	5th ave	North	N	2	6	331
SW_096	4th st	5th ave	6th ave	South	N	2	6	332
SW_097	6th ave	4th st	5th st	East	N	2	5	339
SW_098	6th ave	4th st	5th st	West	N	2	6	343
SW_099	4th st	8th	6th	South	N	1	6	696

UID	Road_Name	To	From	Street Side	Compliance	Cond.	Width FT	Length FT
SW_100	8th ave	4th st	5th st	East	N	2	6	335
SW_101	8th ave	5th st	4th st	West	N	2	6	336
SW_102	4th st	9th ave	8th ave	South	N	1	6	318
SW_103	5th st	9th ave	8th ave	North	N	2	6	317
SW_104	5th st	7th ave	driveway	North	N	3	5	188
SW_105	5th st	6th ave	7th ave	North	N	3	5	334
SW_106	8th ave	3rd st	4th st	West	N	2	6	380
SW_107	4th st	9th ave	8th ave	North	N	2	6	313
SW_108	8th ave	3rd st	4th st	East	N	2	6	372
SW_109	3rd st	6th ave w	8th ave	South	N	2	6	682
SW_110	6th ave	3rd st	4th st	West	N	2	6	326
SW_111	4th st	5th ave	6th ave	North	N	2	6	308
SW_112	5th ave	4th st	3rd st	West	N	2	12	320
SW_113	3rd st	6th ave	5th ave	South	Y	2	11	327
SW_114	6th ave	3rd st	4th st	East	N	2	5	308
SW_115	4th st	8th ave	6th ave	North	N	2	6	687
SW_116	5th st	9th ave	11th ave	North	N	1	8	525
SW_117	4th ave	5th st	6th st	West	N	3	6	329
SW_118	6th st	4th ave	5th ave	North	N	2	6	317
SW_119	5th st	4th ave	5th ave	South	N	2	6	316
SW_120	5th ave	6th st	5th st	East	N	2	5	333
SW_121	5th ave	6th st	5th st	West	N	2	6	337
SW_122	5th st	6th ave	5th ave	South	N	2	6	332
SW_123	6th ave	5th st	6th sg	East	N	2	6	336
SW_124	6th st	5th ave	6th ave	North	N	2	6	332
SW_125	6th ave	5th st	6th st	West	N	2	5	393
SW_126	5th st	6th ave	7th ave	South	N	2	5	331
SW_127	7th ave	5th st	6th st	East	N	2	6	342
SW_128	6th st	6th ave	7th ave	North	N	2	6	329
SW_129	7th ave	5th st	6th st	West	N	3	6	337
SW_130	5th st	8th ave	7th ave	South	N	2	5	328
SW_131	8th ave	5th st	6th st	East	N	2	6	341
SW_132	6th st	8th ave	7th ave	North	N	2	6	325
SW_133	8th ave	5th st	6th st	West	N	2	5	338
SW_134	5th st	9th ave	8th ave	South	N	2	6	316
SW_135	9th ave	5th st	6th st	East	N	2	6	333
SW_136	6th st	8th ave	9th ave	North	N	2	6	324
SW_137	9th ave	5th st	6th st	West	N	3	4	331
SW_138	6th st	9th ave	10th ave	North	N	2	6	322

UID	Road_Name	To	From	Street Side	Compliance	Cond.	Width FT	Length FT
SW_139	5th st	9th ave	10th ave	South	N	2	6	331
SW_140	10th ave	6th st	5th st	East	N	3	5	337
SW_141	10th ave	6th st	5th st	West	N	2	5	341
SW_142	5th st	11th ave	10th ave	South	N	2	6	327
SW_143	11th ave	5th st	6th st	East	N	2	5	320
SW_144	6th st	11th ave	10th ave	North	N	2	6	326
SW_145	6th st	11th ave	12th ave	North	N	2	5	322
SW_146	12th ave	6th st	3rd st	West	N	2	5	310
SW_147	12th ave	private driveway way	6th st	East	N	2	5	168
SW_148	5th St	10th ave	11th ave	North	N	2	5	163
SW_149	6th st	11th ave	10th ave	South	N	2	6	325
SW_150	11th ave	6th	7th	East	N	2	5	327
SW_151	7th st	10th ave	11th ave	North	N	3	4	352
SW_152	6th st	12th ave	13th ave	South	N	3	6	335
SW_153	12th ave	7th st	6th st	West	N	2	5	314
SW_154	7th st	13th ave	12th ave	North	N	3	6	330
SW_155	6th st	11th ave	12th ave	South	N	2	6	322
SW_156	12th st	7th st	6th st	East	N	2	5	314
SW_157	7th st	11th ave	12th ave	North	N	2	6	274
SW_158	11th ave	6th st	7th st	West	N	3	5	322
SW_159	10th ave	7th st	6th st	West	N	2	5	341
SW_160	6th st	9th ave	10th ave	South	N	3	6	325
SW_161	10th ave	7th st	6th st	East	N	3	5	340
SW_162	7th st	10th ave	9th ave	North	N	3	5	323
SW_163	9th ave	6th st	7th st	West	N	3	5	321
SW_164	6th st	8th ave	9th ave	South	N	2	6	324
SW_165	8th ave	6th st	7th st	West	N	3	6	341
SW_166	7th st	9th ave	8th ave	North	N	2	6	322
SW_167	9th ave	6th st	9th st	East	N	2	6	324
SW_168	6th st	8th ave	7th ave	South	N	3	6	332
SW_169	7th ave	6th st	7th st	West	N	2	6	343
SW_170	7th st	7th ave	8th ave	North	N	3	5	331
SW_171	8th ave	6th st	7th st	East	N	3	5	335
SW_172	6th st	7th ave	6th ave	South	N	2	6	345
SW_173	6th st	5th ave	6th ave	South	N	2	6	325
SW_174	6th ave	6th st	7th st	West	N	2	5	346
SW_175	7th st	6th ave	7th ave	North	N	3	5	333
SW_176	7th ave	6th st	7th st	East	N	2	6	328

UID	Road_Name	To	From	Street Side	Compliance	Cond.	Width FT	Length FT
SW_177	6th ave	6th st	7th st	East	N	2	5	339
SW_178	7th st	6th ave	5th ave	North	N	2	6	318
SW_179	5th ave	7th	6th st	West	N	3	6	339
SW_180	6th st	4th ave	5th ave	South	N	2	6	324
SW_181	4th ave	6th st	7th st	West	N	3	6	339
SW_182	7th st	4th ave	5th ave	North	N	2	6	322
SW_183	5th ave	7th st	6th st	East	N	3	6	338
SW_184	7th st	12th ave	drivewat	South	N	4	6	498
SW_185	7th st	10th ave	11th ave	South	N	2	5	419
SW_186	7th st	10th ave	9th ave	South	N	3	5	326
SW_187	7th st	9th ave	8th ave	South	N	2	6	328
SW_188	7th st	7th ave	8th ave	South	N	3	5	330
SW_189	7th st	6th ave	7th ave	South	N	2	6	338
SW_190	7th st	6th ave	5th ave	South	N	2	5	328
SW_191	7th st	4th ave	5th ave	South	N	2	5	332
SW_192	7th st	3rd ave	4th ave	South	N	3	4	296
SW_193	6th st	4th ave	3rd ave	South	N	2	5	325
SW_194	4th ave	6th st	7th st	Southwestern	N	3	5	339
SW_195	th 53	6th st	7th st	West	N	2	6	324
SW_196	6th st	private driveway	th 53	South	N	3	11	139
SW_197	th 53	6th st	7th st	East	N	3	11	319
SW_198	th 53	7th st	8th st	West	N	3	11	310
SW_199	th 53	7th st	8th st	West	N	2	11	312
SW_200	8th st	4th ave	5th ave	North	N	3	5	235
SW_201	4th ave	7th st	8th st	East	N	3	5	334
SW_202	4th ave	7th st	8th st	West	N	2	6	332
SW_203	8th st	5th ave	4th ave	North	N	2	5	321
SW_204	5th ave	8th st	7th st	East	N	3	6	330
SW_205	5th ave	8th st	7th st	West	N	3	6	333
SW_206	8th st	6th ave	5th ave	North	N	3	6	330
SW_207	8th st	7th ave	6th ave	North	N	3	5	334
SW_208	6th ave	7th st	8th st	West	N	3	5	337
SW_209	7th ave	7th st	8th st	East	N	2	5	336
SW_210	7th ave	7th st	8th st	West	N	3	5	337
SW_211	8th st	7th ave	8th ave	North	N	3	6	325
SW_212	8th ave	7th st	8th st	East	N	3	5	337
SW_213	8th ave	7th st	8th st	West	N	3	6	337
SW_214	8th st	9th ave	8th ave	North	N	2	5	323

ADA Transition Plan - February 2020

UID	Road_Name	To	From	Street Side	Compliance	Cond.	Width FT	Length FT
SW_215	9th ave	7th st	8th st	East	N	3	5	332
SW_216	9th ave	7th st	8th st	West	N	3	4	320
SW_217	8th st	9th ave	10th ave	North	N	3	5	320
SW_218	10th ave	8th st	7th st	East	N	3	5	322
SW_219	10th ave	8th st	7th st	West	N	3	5	318
SW_220	8th st	10th ave	11th ave	North	N	3	5	423
SW_221	11th ave	7th st	8th st	East	N	3	5	309
SW_222	8th st	driveway mid block	11th ave	North	N	3	5	254
SW_223	11th st	home lane	14th ave	North	N	2	3	881
SW_224	11th st	16th ave	15th ave	East	N	2	4	533
SW_225	11th st	14th ave	13th ave	North	N	3	4	665
SW_226	11th st	13th st	11th st	North	N	2	4	562
SW_227	11th st	11th ave	10th ave	North	N	2	5	437
SW_228	11th st	10th ave	9th ave	North	N	2	5	317
SW_229	14th ave		home ln	East	N	4	4	122
SW_230	9th st	14th ave	13th ave	South	N	2	5	662
SW_231	10th st	12th ave	13th ave	North	N	2	5	575
SW_232	10th st	12th ave	13th ave	South	N	2	5	577
SW_233	10th st	11th ave	10th ave	North	N	3	5	441
SW_234	10th st	11th ave	10th ave	South	N	3	5	437
SW_235	10th st	9th ave	10th ave	North	N	2	5	323
SW_236	10th st	9th ave	10th ave	South	N	3	5	328
SW_237	9th ave	11th st	10th st	West	N	3	5	287
SW_238	9th ave	10th st	11th st	South	N	2	5	282
SW_239	10th st	8th ave	7th ave	South	N	3	5	327
SW_240	7th ave	10th st	11th st	East	N	3	5	289
SW_241	7th ave	10th st	11th st	East	N	3	5	289
SW_242	10th st	7th ave	6th ave	North	N	2	5	336
SW_243	10th st	6th ave	5th ave	South	N	2	5	334
SW_244	10th st	5th ave	4th ave	South	N	2	5	329
SW_245	10th st	9th ave	8th ave	South	N	3	5	323
SW_246	4th ave	9th st	10th st	West	N	2	6	321
SW_247	9th st	3rd ave	4th ave	South	N	2	5	300
SW_248	9th st	5th ave	4th ave	South	N	2	5	322
SW_249	9th st	6th ave	5th ave	South	N	3	5	331
SW_250	5th ave	10th st	9th st	West	N	2	5	320
SW_251	6th ave	9th st	10th st	East	N	2	5	317
SW_252	10th st	6th ave	5th ave	North	N	2	5	336

UID	Road_Name	To	From	Street Side	Compliance	Cond.	Width FT	Length FT
SW_253	6th ave	11th st	10th st	West	N	3	5	315
SW_254	10th st	7th ave	6th ave	North	N	2	5	330
SW_255	9th st	6th ave	7th ave	South	N	3	5	315
SW_256	7th ave	9th st	10th st	East	N	3	5	313
SW_257	7th ave	9th st	10th st	West	N	2	5	323
SW_258	10th st	8th ave	7th ave	North	N	2	5	315
SW_259	8th ave	9th st	10th st	East	N	3	5	311
SW_260	9th st	8th ave	7th ave	South	N	3	5	313
SW_261	8th ave	9th st	10th st	West	N	3	5	316
SW_262	10th st	9th ave	8th ave	North	N	3	5	309
SW_263	9th st	8th ave	9th ave	South	N	3	6	315
SW_264	9th ave	10th st	9th st	East	N	2	5	314
SW_265	9th ave	10th st	9th st	West	N	2	5	317
SW_266	9th st	10th ave	9th ave	South	N	2	6	323
SW_267	10th ave	10th st	9th st	East	N	3	5	315
SW_268	9th st	10th ave	11th ave	South	N	2	6	433
SW_269	11th ave	9th st	10th st	East	N	2	5	313
SW_270	9th st	driveway	11th ave	South	N	2	5	92
SW_271	8th st	mid block driveway	11th ave	South	N	3	5	297
SW_272	14th ave	church driveway	home ln	East	N	2	5	148
SW_273	9th st	14th ave	13th ave	North	N	2	5	655
SW_274	9th st	12th ave	13th ave	North	N	2	5	576
SW_275	9th st	10th ave	11th ave	North	N	2	5	433
SW_276	8th st	10th ave	11th ave	South	N	2	5	424
SW_277	11th ave	8th st	9th st	East	N	3	5	315
SW_278	10th ave	9th st	8th st	West	N	3	5	315
SW_279	8th st	9th ave	10th ave	South	N	2	5	322
SW_280	10th ave	9th st	8th st	East	N	3	5	320
SW_281	9th st	9th ave	10th ave	North	N	3	5	315
SW_282	9th ave	8th st	9th st	West	N	2	5	314
SW_283	9th st	8th ave	9th ave	North	N	3	6	320
SW_284	9th ave	8th st	9th st	East	N	2	5	317
SW_285	8th st	8th ave	9th ave	South	N	3	6	321
SW_286	8th ave	8th st	9th st	West	N	3	5	316
SW_287	8th ave	8th st	9th st	East	N	3	5	321
SW_288	9th st	7th ave	8th ave	North	N	3	5	315
SW_289	8th st	8th ave	7th ave	South	N	3	5	319
SW_290	7th ave	8th st	9th st	West	N	3	4	315

ADA Transition Plan - February 2020

UID	Road_Name	To	From	Street Side	Compliance	Cond.	Width FT	Length FT
SW_291	9th st	6th ave	7th ave	North	N	3	5	335
SW_292	7th ave	8th st	9th st	East	N	2	5	326
SW_293	8th st	7th ave	6th ave	South	N	2	5	335
SW_294	6th ave	8th st	9th st	West	N	3	5	326
SW_295	8th st	6th ave	5th ave	South	N	3	6	333
SW_296	6th ave	8th st	9th st	East	N	3	5	328
SW_297	9th st	6th ave	5th ave	North	N	3	5	337
SW_298	5th ave	9th st	8th st	West	N	3	6	319
SW_299	4th ave	8th st	9th st	West	N	2	6	322
SW_300	9th st	5th ave	4th ave	North	N	2	6	320
SW_301	5th ave	9th st	8th st	East	N	3	6	321
SW_302	8th st	5th ave	4th ave	South	N	2	5	316
SW_303	8th st	4th ave	3rd ave	South	N	2	5	298
SW_304	9th st	4th ave	3rd ave	North	N	2	5	302
SW_305	th 53	8th st	9th st	West	N	2	11	313
SW_306	th 53	8th st	9th st	East	N	2	5	321
SW_307	11th ave	11th st	13th st	West	N	2	5	611
SW_308	11th ave	13th st	15th st	East	N	2	4	636
SW_309	9th ave	11th st	13th st	West	N	3	4	615
SW_310	11th st	8th ave	9th ave	South	N	2	5	313
SW_311	9th ave	11th st	13th st	East	N	2	5	616
SW_312	13th st	8th ave	9th ave	North	N	2	5	322
SW_313	8th ave	11th st	13th st	West	N	2	5	615
SW_314	9thave	13th st	15th st	West	N	2	5	638
SW_315	9th ave	13th st	15th st	East	N	2	5	640
SW_316	7th ave	11th st	13th st	East	N	3	5	624
SW_317	7th ave	11th st	13th st	East	N	3	5	621
SW_318	7th ave	13th st	15th st	East	N	2	5	642
SW_319	7th ave	13th st	15th st	West	N	2	5	412
SW_320	11th ave	12th st	11th st	East	N	3	5	286
SW_321	6th ave	parking	11th st	West	N	3	5	117
SW_322	th 53	9th st	10th st	West	N	2	11	312
SW_323	th 53	10th st	11th st	West	N	3	11	271
SW_324	th 53	9th st	11th	East	N	3	11	643
SW_325	th 53	11th st	12th st	East	N	2	11	197
SW_326	12th st	1st ave	th 53	North	N	3	5	146
SW_327	12th st	1st ave	th 53	North	N	3	5	447
SW_328	12th st	2nd ave	1st ave	North	N	2	5	329
SW_329	12th st	1st ave e	main ave	North	N	3	5	328

UID	Road_Name	To	From	Street Side	Compliance	Cond.	Width FT	Length FT
SW_330	th 53	11th st	12th st	West	N	2	11	240
SW_331	th 53	13th st	12th st	West	N	2	11	242
SW_332	12th st	1st ave	th 53	South	N	3	5	603
SW_333	12th st	1st ave w	main ave	South	N	4	5	330
SW_334	12th st	1st ave e	main ave	North	N	3	4	328
SW_335	12th st	1st ave e	2nd ave e	South	N	3	5	305
SW_336	1st ave	11th st	12th st	East	N	3	4	139
SW_337	th 53	12th st	13th st	East	N	2	11	329
SW_338	th 53	13th st	14th st	East	N	2	11	340
SW_339	th 53	14th st	15th st	East	N	3	11	322
SW_340	th 53	15th st	16th st	East	N	2	6	415
SW_341	th 53	15th st	16th st	West	N	2	6	423
SW_342	th 53	16th st	17th st	East	N	2	6	437
SW_343	th 53	16th st	17th st	East	N	2	6	452
SW_344	17th st	th 53	1st ave	North	N	2	6	306
SW_345	13th st	1st ave	th 53	North	N	2	5	526
SW_346	1st ave	12th ave	13th ave	East	N	3	5	329
SW_347	1st ave	13th st	12th st	East	N	3	5	329
SW_348	main ave	12th st	13th st	West	N	3	5	317
SW_349	main ave	12th st	13th st	Southeastern	N	3	5	318
SW_350	13th st	private driveway	main ave	North	N	3	5	132
SW_351	13th st	private driveway	1st ave e	North	N	3	5	122
SW_352	1st ave e	12th st	13th st	West	N	2	5	332
SW_353	1st ave e	12th st	13th st	East	N	2	5	324
SW_354	2nd ave e	13th st	12th st	East	N	3	4	330
SW_355	2nd ave e	13th st	12th st	East	N	3	4	329
SW_356	13th st	2nd ave e	3rd ave e	South	N	2	5	418
SW_357	3rd ave e	13th st	14th st	West	N	2	4	316
SW_358	2nd Ave E	14th St	13th St	East	N	4	4	331
SW_359	14th st	3rd ave	2nd ave	North	N	4	4	409
SW_360	2nd ave e	14th st	13th st	West	N	3	5	332
SW_361	14th st	2nd ave e	3rd ave e	North	N	3	4	323
SW_362	1st ave e	13th st	14th st	East	N	4	4	331
SW_363	1st ave e	14th st	13th st	West	N	3	4	330
SW_364	Main Ave	14th st	13th st	East	N	4	4	321
SW_365	Main Ave	14th st	13th st	West	N	4	4	324
SW_366	13th st	main ave	1st ave w	South	N	4	5	331

UID	Road_Name	To	From	Street Side	Compliance	Cond.	Width FT	Length FT
SW_367	1st ave	14th st	13th st	East	N	2	5	335
SW_368	1st ave	14th st	13th st	West	N	3	5	328
SW_369	13th st	1st ave	th 53	South	N	3	5	497
SW_370	14th st	1st ave	th 53	North	N	3	5	381
SW_371	3rd ave e	15th st	14th st	West	N	2	4	322
SW_372	14th st	3rd ave e	2nd ave e	South	N	3	4	406
SW_373	2nd Ave e	14th st	15th st	East	N	4	5	332
SW_374	15th ave	3rd ave e	2nd ave d	North	N	2	4	401
SW_376	2nd ave e	15th st	14th st	East	N	3	4	333
SW_377	1st ave e	14th ave	15th ave	East	N	4	4	333
SW_378	1st ave e	15th st	14th st	West	N	4	4	330
SW_379	14th st	1st ave	main ave	South	N	4	4	312
SW_380	Main Ave	15th St	14th St	East	N	4	4	320
SW_381	Main Ave	15th st	14th st	West	N	4	4	323
SW_382	1st ave	15th st	14th	West	N	3	5	329
SW_383	1st ave	15th st	14th st	East	N	2	5	331
SW_384	14th st	th 53	1st ave	South	N	3	5	361
SW_385	17th st	th 53	main ave	North	N	2	6	338
SW_386	17th st	main ave	1st ave e	North	N	2	6	334
SW_387	17th st	1st ave e	2nd ave e	North	N	2	6	331
SW_388	17th ave	2nd ave e	3rd ave e	North	N	4	4	321
SW_389	2nd ave e	16th st	17th st	East	N	4	4	436
SW_390	2nd ave e	17th st	18th st	Northeastern	N	4	4	429
SW_391	3rd ave e	16th st	17th st	East	N	4	4	304
SW_392	2nd ave e	15th st	16th st	East	N	3	4	434
SW_393	3rd ave e	15th st	16th st	East	N	4	4	425
SW_394	2nd ave e	18th st	19th st	East	N	4	4	432
SW_395	2nd ave e	19th st	20th st	East	N	3	4	441
SW_396	main ave	19th st	20th st	East	N	2	6	399
SW_397	th 53	17th st	18th st	West	N	3	4	439
SW_398	th 53	17th st	18th st	East	N	4	6	444
SW_399	th 53	18th st	19th st	East	N	2	5	526
SW_400	th 53	18th st	19th st	West	N	2	4	423
SW_401	TH 53	19th St	20th st	West	N	2	4	419
SW_402	th 53	19th st	20th st	East	N	2	5	409
SW_403	TH 53	20th St	21st St	West	N	2	6	412
SW_404	TH 53	20th St	21st St	East	N	2	4	410
SW_405	TH 53	21st St	22nd st	West	N	2	5	789
SW_406	TH 53		22nd St	East	N	2	4	410

UID	Road_Name	To	From	Street Side	Compliance	Cond.	Width FT	Length FT
SW_407	TH 53	22nd St	Crescent Dr	West	N	2	5	626
SW_408	TH 53	22nd St	crescent drive	Northeastern	N	2	4	615
SW_409	th 53	14th st	13th st	West	N	3	11	313
SW_410	th 53	15th st	14th st	West	N	3	11	317
SW_411	4th st	3rd ave	2nd ave	South	N	3	11	295
SW_412	11th st	13th ave	14th ave	West	N	2	4	656
SW_413	11th st	12th ave	13th ave	West	N	2	4	568
SW_414	6th ave	7th st	8th st	East	N	3	5	311
SW_415	3rd ave	5th st	4th st	East	N	2	8	310
SW_416	11th ave	6th st	5th st	West	N	2	5	383

CURB RAMPS

UID	Outlet Road	Intersection	Quad.	Cond.	Compliance
PR_001	crescent drive	TH 53	S	3	N
PR_002	22nd St	Crescent Dr	N	3	N
PR_003	22nd St	TH 53	S	3	N
PR_004	Crescent Dr	TH 53	S	3	N
PR_005	22nd St	5	N	3	N
PR_006	22nd St	TH 53	S	3	N
PR_007	21 St	TH 53	N	3	N
PR_008	21 St	TH 53	S	3	N
PR_009	21 St	TH 53	N	3	N
PR_010	21 St	TH 53	S	3	N
PR_011	20th St	TH 53	N	3	N
PR_012	20th St	TH 53	S	3	N
PR_013	19th St	TH 63	NE	3	N
PR_014	19th st	th 53	SE	3	N
PR_015	18th st	th 53	NE	3	N
PR_016	18th st	th 53	SE	3	N
PR_017	17th st	th 53	NE	3	N
PR_018	17th st	th 53	NW	3	N
PR_019	18th st	th 53	SW	3	N
PR_020	18th st	th 53	NW	3	N
PR_021	19th st	th 53	SW	4	N
PR_022	19th st	th 53	N	4	N
PR_023	20th st	th 53	S	3	N
PR_024	20th st	th 53	N	3	N
PR_025	20th st	main ave	S	4	N

UID	Outlet Road	Intersection	Quad.	Cond.	Compliance
PR_026	19th st	main ave	N	4	N
PR_027	20th st	2nd ave e	S	4	N
PR_028	19th st	2nd ave e	N	4	N
PR_029	19th st	2nd ave e	S	4	N
PR_030	18th st	2nd ave e	N	4	N
PR_031	18th st	2nd ave e	S	4	N
PR_032	17th st	2nd ave e	SW	4	N
PR_033	16th st	2nd ave e	N	4	N
PR_034	16th st	2nd ave e	SE	4	N
PR_035	15th st	2nd ave e	NW	3	N
PR_036	15th st	3rd ave e	N	3	N
PR_037	16th st	3rd ave e	S	4	N
PR_038	16th st	3rd ave e	N	4	N
PR_039	17th st	3rd ave e	S	4	N
PR_040	3rd ave e	17th st	E	4	N
PR_041	2nd ave e	17th st	E	3	N
PR_042	1st ave e	17th st	W	3	N
PR_043	1st ave e	17th st	E	3	N
PR_044	main ave	17th st	W	3	N
PR_045	main ave	17th st	E	3	N
PR_046	1st ave	17th st	W	3	N
PR_047	1st ave	17th st	E	3	N
PR_048	17th st	th 53	SW	3	N
PR_049	16th st	th 53	NW	3	N
PR_050	16th st	th 53	SW	3	N
PR_051	15th st	th 53	NW	3	N
PR_052	15th ave	th 53	NE	3	N
PR_053	16th st	th 53	SE	3	N
PR_054	16th st	th 53	NE	3	N
PR_055	17th st	th 53	NE	3	N
PR_056	main ave	14th st	W	4	N
PR_057	14th st	1st ave e	N	3	N
PR_058	1st ave e	14th ave	E	3	N
PR_059	1st ave e	14th st	W	3	N
PR_060	14th st	1st ave e	N	3	N
PR_061	1st ave e	15th st	SW	3	N
PR_062	1st ave e	15th st	SE	3	N
PR_063	15th st	2nd ave e	SE	3	N
PR_064	2nd ave e	15th st	SW	3	N
PR_065	3rd ave e	15th st	SE	3	N

UID	Outlet Road	Intersection	Quad.	Cond.	Compliance
PR_066	3rd ave e	14th st	NE	3	N
PR_067	14th st	2nd ave e	N	3	N
PR_068	2nd ave e	14th st	W	3	N
PR_069	14th st	2nd ave e	N	3	N
PR_070	14th st	2nd ave e	S	3	N
PR_071	2nd ave e	14th st	SW	3	N
PR_072	3rd ave e	14th st	SE	3	N
PR_073	13th st	3rd ave e	NE	3	N
PR_074	13th st	2nd ave e	N	3	N
PR_075	2nd ave e	13th st	W	3	N
PR_076	13th st	2nd ave e	SW	3	N
PR_077	12th st	2nd ave e	N	3	N
PR_078	2nd ave e	12th st	NE	3	N
PR_079	12th st	2nd ave e	E	3	N
PR_080	13th st	2nd ave e	S	3	N
PR_081	14th st	2nd ave e	S	3	N
PR_082	2nd ave e		E	3	N
PR_083	1st ave e	14th st	SW	2	N
PR_084	14th st	1st ave e	S	3	N
PR_085	1st ave e	14th st	E	3	N
PR_086	14th st	1st ave e	S	3	N
PR_087	14th st	Main Ave	S	3	N
PR_088	14th st		N	3	N
PR_089	14th st	14th ave	S	3	N
PR_090			NW	2	N
PR_091	13th Ave	Keenan Dr	W	2	N
PR_092	13th Ave	Keenan Dr	E	2	N
PR_093	Parking Lot	Keenan Dr	W	2	N
PR_094	Parking Lot	Keenan Dr	E	2	N
PR_095	Aspen Way	Keenan Dr	E	2	N
PR_096	Aspen Way	Keenan Dr	W	2	N
PR_097	2nd st	12th ave	NE	3	N
PR_098	2nd st	12th ave	S	3	N
PR_099	12th ave	2nd st	SW	3	N
PR_100	2nd st	10th ave	SE	3	N
PR_101	2nd st	10th ave	S	3	N
PR_102	2nd st	10th ave	N	3	N
PR_103	10th ave	2nd st	NE	3	N
PR_104	12th ave	2nd st	SE	3	N
PR_105	3rd st	12th ave	S	3	N

UID	Outlet Road	Intersection	Quad.	Cond.	Compliance
PR_106	12th ave	3rd st	E	3	N
PR_107	12th ave	3rd st	W	3	N
PR_108	10th ave	3rd st	S	3	N
PR_109	10th ave	3rd st	W	3	N
PR_110	3rd st	10th ave	S	3	N
PR_111	9th ave	3rd st	E	3	N
PR_112	3rd st	9th ave	S	3	N
PR_113	9th ave	3rd st	W	3	N
PR_114	3rd st	9th ave	S	3	N
PR_115	8th ave	3rd st	E	3	N
PR_116	3rd st	8th ave	S	3	N
PR_117	3rd st	8th ave	SW	3	N
PR_118	8th ave	3rd st	W	4	N
PR_119	6th ave w	3rd st	SE	3	N
PR_120	2nd st	6th ave w	N	3	N
PR_121	2nd st	6th ave w	S	3	N
PR_122	6th ave w	2nd st	W	3	N
PR_123	6th ave w	2nd st	E	3	N
PR_124	8th ave	2nd st	W	4	N
PR_125	2nd st	8th ave	NW	3	N
PR_126	8th ave	2nd st	NE	3	N
PR_127	8th ave	2nd st	E	3	N
PR_128	9th ave	2nd st	W	3	N
PR_129	2nd st	9th ave	S	3	N
PR_130	2nd st	9th ave	N	3	N
PR_131	9th ave	2nd st	W	3	N
PR_132	9th ave	2nd st	E	3	N
PR_133	2nd st	9th ave	N	3	N
PR_134	2nd st	9th ave	S	3	N
PR_135	9th ave	2nd st	E	3	N
PR_136	10th ave	2nd st	SW	3	N
PR_137	2nd st	10th ave	S	3	N
PR_138	2nd st	10th ave	NW	3	N
PR_139	10th ave	2nd st	SW	3	N
PR_140	10th ave	riverside dr	E	3	N
PR_141	12th ave	riverside dr	W	3	N
PR_142	10th ave	riverside dr	W	3	N
PR_143	9th ave	riverside dr	E	3	N
PR_144	9th ave	riverside dr	W	3	N
PR_145	3rd st	4th ave	S	3	N

UID	Outlet Road	Intersection	Quad.	Cond.	Compliance
PR_146	3rd st	4th ave	SE	4	N
PR_147	2nd st	4th ave	N	2	N
PR_148	pca parking lot	2nd st	W	4	N
PR_149	parking lot	2nd st	W	3	N
PR_150	2nd st	4th ave	S	3	N
PR_151	2nd st	4th ave	S	3	N
PR_152	2nd st	4th ave	NW	3	N
PR_153	2nd st	3rd ave	N	3	N
PR_154	3rd ave	2nd st	NE	3	N
PR_155	3rd ave	2nd st	NW	3	N
PR_156	2nd ave	2nd st	NE	3	N
PR_157	2nd ave	2nd st	SE	3	N
PR_158	2nd ave	border	N	4	N
PR_159	3rd st	2nd ave	S	3	N
PR_160	3rd st	3rd ave	SW	3	N
PR_161	3rd ave w	3rd st	S	3	N
PR_162	3rd st	5th ave	SW	3	N
PR_163	3rd st	5th ave	SE	3	N
PR_164	3rd st	6th ave w	SW	3	N
PR_165	th 53	14th st	NW	3	N
PR_166	th 53	14th st	SW	3	N
PR_167	13th	th 53	NW	3	N
PR_168	th 53	13th st	SW	3	N
PR_169	12th st	th 53	NW	3	N
PR_170	12th st	th 53	SW	3	N
PR_171	11th st	th 53	NW	3	N
PR_172	12th st	1st ave	N	3	N
PR_173	1st ave	12th st	SE	3	N
PR_174	1st ave	12th st	W	3	N
PR_175	12th st	1st ave	S	3	N
PR_176	11th ave	1st ave w	N	4	N
PR_177	main ave	12th st	SE	3	N
PR_178	main ave	12th st	NE	3	N
PR_179	1st ave w	12th st	W	3	N
PR_180	12th st	1st ave w	N	3	N
PR_181	13th st	1st ave w	N	3	N
PR_182	13th st	1st ave w	N	3	N
PR_183	1st ave w	13th st	W	3	N
PR_184	14th st	1st ave w	S	3	N
PR_185	14th st	1st ave	N	3	N

UID	Outlet Road	Intersection	Quad.	Cond.	Compliance
PR_186	1st ave w	14th st	W	3	N
PR_187	14th st	1st ave w	E	3	N
PR_188	14th st	1st ave w	N	3	N
PR_189	1st ave	15th st	S	3	N
PR_190	1st ave	15th st	S	3	N
PR_191	15th st	th 53	SW	3	N
PR_192	1st ave	14th st	W	3	N
PR_193	1st ave	14th	E	3	N
PR_194	14th st	1st ave	S	3	N
PR_195	13th st	1st ave	N	3	N
PR_196	1st ave	13th st	E	3	N
PR_197	13th st	1st ave	S	3	N
PR_198	1st ave	13th st	E	3	N
PR_199	15th st	main ave	S	3	N
PR_200	15th ave	main ave	S	3	N
PR_201	13th st	2nd ave e	N	3	N
PR_202	12th st	1st ave	E	3	N
PR_203	1st ave	12th st	E	3	N
PR_204	main ave	12th st	NW	3	N
PR_205	12th st	main ave	SW	3	N
PR_206	1st ave e	12th st	E	3	N
PR_207	12th st	1st ave e	S	3	N
PR_208	12th st	1st ave e	N	3	N
PR_209	1st ave e	12th st	E	3	N
PR_210	1st ave e	12th st	W	3	N
PR_211	12th st	1st ave e	N	3	N
PR_212	1st ave e	13th st	E	3	N
PR_213	13th st	1st ave e	S	3	N
PR_214	13th st	1st ave e	N	3	N
PR_215	13th st	1st ave e	N	3	N
PR_216	13th ave	1st ave e	S	3	N
PR_217	main ave	13th st	SW	3	N
PR_218	13th st	main ave	SE	3	N
PR_219	13th st	main ave	NE	3	N
PR_220	13th st	main ave	NW	3	N
PR_221	11th st	th 53	SW	3	N
PR_222	th 53	11th st	SE	3	N
PR_223	10th st	th 53	NE	3	N
PR_224	10th st	th 53	S	3	N
PR_225	9th st	th 53	NE	3	N

UID	Outlet Road	Intersection	Quad.	Cond.	Compliance
PR_226	9th st	th 53	SE	3	N
PR_227	8th st	th 52	NE	3	N
PR_228	th 53	8th st	SE	3	N
PR_229	7th st	th 53	NE	3	N
PR_230	7th st	th 53	SE	3	N
PR_231	th 53	7th st	W	3	N
PR_232	7th st	th 53	SW	3	N
PR_233	7th st	th 53	NW	3	N
PR_234	8th st	th 53	SW	3	N
PR_235	8th st	th 53	NW	3	N
PR_236	9th st	th 53	SW	3	N
PR_237	9th st	th 53	NW	3	N
PR_238	13th st	th 53	SE	3	N
PR_239	12th st	th 53	NE	2	N
PR_240	th 53	12th st	SE	2	N
PR_241	th 53	11th st	NE	3	N
PR_242	13th st	th 53	NE	3	N
PR_243	14th st	th 53	SE	3	N
PR_244	14th st	th 53	NE	3	N
PR_245	15th st	th 53	NE	3	N
PR_246	6th st	th 53	SE	3	N
PR_247	th 53	6th st	SE	3	N
PR_248	6th st	th 53	NE	3	N
PR_249	2nd ave	6th st	SE	3	N
PR_250	5th st	2nd ave	NE	3	N
PR_251	5th st	2nd ave	SE	4	N
PR_252	4th st	2nd ave	NE	3	N
PR_253	4th st	2nd ave	SW	2	N
PR_254	parking lot	2nd ave	E	2	N
PR_255	3rd st	6th st	SW	3	N
PR_256	6th st	3rd st	SE	3	N
PR_257	river view blvd	hwy 71/11	W	3	N
PR_258	river view blvd	hwy 71/11	E	3	N
PR_259	center st	hwy 71/11	W	3	N
PR_260	center st	hwy 71/11	E	3	N
PR_261	river view Blvd	hwy 71/11	W	3	N
PR_262	river view blvd	hwy 71/11	E	3	N
PR_263	terrace ln	hwy 71/11	W	3	N
PR_264	terrace ln	hwy 71/11	E	3	N
PR_265	unknown	hwy 71/11	W	2	N

UID	Outlet Road	Intersection	Quad.	Cond.	Compliance
PR_266	unknown	hwy 71/11	E	2	N
PR_267	Americ inn road	hwy 71/11 frontage road	SW	3	N
PR_268	americ inn road	hwy 71/11 frontage road	N	4	N
PR_269	shorewood dr	hwy 71/11 frontage rd	SW	3	N
PR_270	shorewood dr	hwy 71/11 frontage rd	N	3	N
PR_271	15th ave	11th st	NE	3	N
PR_272	11th st	home ln	N	2	N
PR_273	home ln	11th st	SE	2	N
PR_274	home ln	11th st	SE	3	N
PR_275	15th ave	11th st	NW	3	N
PR_276	14th st	15th ave	S	3	N
PR_277	11th st	14th ave	NW	3	N
PR_278	14th ave	11th st	NE	3	N
PR_279	14th ave	11th st	SE	3	N
PR_280	11th st	14th ave	SW	3	N
PR_281	13th ave	11th st	NE	3	N
PR_282	13th ave	11th st	SE	2	N
PR_283	13th ave	11th st	SW	2	N
PR_284	13th ave	11th st	NW	3	N
PR_285	11th ave	11th st	NE	3	N
PR_286	11th ave	11th st	SE	3	N
PR_287	11th st	11th ave	SW	3	N
PR_288	11th st	11th ave	NW	3	N
PR_289	13th st	11th ave	SW	3	N
PR_290	13th st	11th ave	NW	3	N
PR_291	15th st	11th ave	E	4	N
PR_292	15th st	9th ave	SW	2	N
PR_293	15th st	9th ave	SE	2	N
PR_294	13th st	9th ave	SW	2	N
PR_295	13th st	9th ave	NW	2	N
PR_296	13th st	9th ave	NE	2	N
PR_297	13th st	9th ave	NE	2	N
PR_298	11th st	9th ave	NW	1	Y
PR_299	11th st	9th ave	NE	1	Y
PR_300	9th ave	11th st	SE	3	N
PR_301	10th ave	11th st	SW	3	N
PR_302	10th ave	11th st	SE	3	N
PR_303	school driveway	11th st	SE	3	N

UID	Outlet Road	Intersection	Quad.	Cond.	Compliance
PR_304	hwy 71/11	11th st	NW	3	N
PR_305	10th st	9th ave	NW	2	N
PR_306	11th st	9th ave	SW	3	N
PR_307	10th st	9th ave	NE	2	N
PR_308	9th ave	10th st	SW	2	N
PR_309	10th st	9th ave	SW	2	N
PR_310	9th st	9th ave	SW	2	N
PR_311	9th st	9th ave	NE	2	N
PR_312	9th st	9th ave	NE	2	N
PR_313	9th st	9th ave	SE	2	N
PR_314	9th ave	8th st	NW	2	N
PR_315	9th ave	8th st	SW	2	N
PR_316	8th st	9th ave	SE	2	N
PR_317	9th ave	8th st	NE	2	N
PR_318	7th st	9th ave	NE	3	N
PR_319	7th st	9th ave	NE	3	N
PR_320	7th st	9th ave	SE	3	N
PR_321	9th ave	7th st	SE	3	N
PR_322	9th ave	7th st	W	3	N
PR_323	7th st	9th ave	SW	3	N
PR_324	7th st	9th ave	NW	3	N
PR_325	9th ave	7th st	NW	3	N
PR_326	9th ave	6th st	NE	3	N
PR_327	6th st	9th ave	NE	3	N
PR_328	9th ave	6th st	NW	3	N
PR_329	6th st	9th ave	NW	3	N
PR_330	6th st	9th ave	SW	2	N
PR_331	9th ave	6th st	SW	3	N
PR_332	9th ave	6th st	SE	3	N
PR_333	6th st	9th ave	SE	3	N
PR_334	5th st	9th ave	SE	2	N
PR_335	5th st	9th ave	SW	2	N
PR_336	9th ave	5th st	NW	2	N
PR_337	5th st	9th ave	NE	2	N
PR_338	4th st	9th ave	SE	2	N
PR_339	9th ave	4th st	NE	2	N
PR_340	3rd st	9th ave	N	2	N
PR_341	3rd st	9th ave	NE	2	N
PR_342	3rd st	8th ave	NE	3	N
PR_343	3rd st	8th ave	NW	3	N

UID	Outlet Road	Intersection	Quad.	Cond.	Compliance
PR_344	8th ave	4th st	SE	2	N
PR_345	4th st	8th ave	SW	3	N
PR_346	8th ave	4th st	NW	3	N
PR_347	4th st	8th ave	NE	2	N
PR_348	10th st	8th ave	N	3	N
PR_349	8th ave	10th st	W	3	N
PR_350	8th ave	10th st	NE	3	N
PR_351	10th st	8th ave	S	3	N
PR_352	8th ave	10th st	E	3	N
PR_353	8th ave	10th st	W	3	N
PR_354	10th st	8th ave	S	3	N
PR_355	8th ave	9th st	W	3	N
PR_356	9th st	8th ave	S	3	N
PR_357	8th ave	9th st	W	3	N
PR_358	9th st	8th ave	N	3	N
PR_359	8th ave	9th st	E	3	N
PR_360	9th st	8th ave	N	3	N
PR_361	9th st	8th ave	S	3	N
PR_362	8th ave	9th st	E	3	N
PR_363	8th ave	8th st	W	3	N
PR_364	8th st	8th ave	S	3	N
PR_365	8th ave	8th st	E	3	N
PR_366	8th st	8th ave	S	3	N
PR_367	8th st	8th ave	N	3	N
PR_368	8th ave	8th st	E	3	N
PR_369	8th ave	8th st	W	3	N
PR_370	8th st	8th ave	N	3	N
PR_371	8th ave	7th st	W	3	N
PR_372	7th st	8th ave	S	3	N
PR_373	8th ave	7th st	E	3	N
PR_374	7th st	8th ave	S	3	N
PR_375	7th st	8th ave	N	3	N
PR_376	8th ave	7th st	E	3	N
PR_377	7th st	8th ave	W	3	N
PR_378	8th ave	6th st	W	3	N
PR_379	6th st	8th ave	S	3	N
PR_380	6th st	8th ave	N	3	N
PR_381	8th ave	6th st	W	3	N
PR_382	8th ave	6th st	E	3	N
PR_383	6th st	8th ave	N	3	N

UID	Outlet Road	Intersection	Quad.	Cond.	Compliance
PR_384	6th st	8th ave	S	3	N
PR_385	8th ave	6th st	W	3	N
PR_386	5th st	8th ave	N	2	N
PR_387	8th ave	5th st	W	3	N
PR_388	8th ave	5th st	E	2	N
PR_389	5th st	8th ave	N	2	N
PR_390	5th st	8th ave	S	2	N
PR_391	8th ave	5th st	E	2	N
PR_392	5th st	8th ave	W	2	N
PR_393	7th ave	5th st	E	2	N
PR_394	5th st	7th ave	N	2	N
PR_395	5th st	7th ave	S	2	N
PR_396	7th ave	5th st	E	2	N
PR_397	7th ave	5th st	W	2	N
PR_398	5th st	7th ave	S	2	N
PR_399	5th st	7th ave	N	2	N
PR_400	7th ave	5th st	W	2	N
PR_401	6th st	7th ave	NE	3	N
PR_402	6th st	7th ave	NE	3	N
PR_403	6th st	7th ave	S	3	N
PR_404	7th ave	6th st	E	3	N
PR_405	7th ave	6th st	W	3	N
PR_406	6th st	7th ave	NE	3	N
PR_407	6th st	7th ave	N	3	N
PR_408	7th ave	6th st	SW	3	N
PR_409	7th ave	7th st	E	3	N
PR_410	7th st	7th ave	N	3	N
PR_411	7th st	7th ave	E	3	N
PR_412	7th ave	7th st	S	3	N
PR_413	7th ave	7th st	W	3	N
PR_414	7th st	7th ave	S	3	N
PR_415	7th st	7th ave	N	3	N
PR_416	7th ave	7th st	W	3	N
PR_417	7th ave	8th st	N	3	N
PR_418	8th st	7th ave	N	3	N
PR_419	8th st	7th ave	NW	3	N
PR_420	7th ave	8th st	NW	3	N
PR_421	7th ave	8th st	W	3	N
PR_422	8th st	7th ave	S	3	N
PR_423	8th st	7th ave	N	3	N

UID	Outlet Road	Intersection	Quad.	Cond.	Compliance
PR_424	7th ave	8th st	W	3	N
PR_425	7th ave	9th st	E	3	N
PR_426	9th st	7th ave	N	3	N
PR_427	9th st	7th ave	S	3	N
PR_428	7th ave	9th st	E	3	N
PR_429	7th ave	9th st	W	3	N
PR_430	9th st	7th ave	S	3	N
PR_431	9th st	7th ave	N	3	N
PR_432	7th ave	9th st	W	3	N
PR_433	7th ave	10th st	E	3	N
PR_434	10th st	7th ave	N	3	N
PR_435	10th st	7th ave	S	3	N
PR_436	7th ave	10th st	E	3	N
PR_437	7th ave	10th st	W	3	N
PR_438	10th st	7th ave	S	3	N
PR_439	10th st	7th ave	N	3	N
PR_440	10th st	7th ave	W	3	N
PR_441	11th st	7th ave	N	3	N
PR_442	11th st	7th ave	S	3	N
PR_443	11th st	7th ave	S	3	N
PR_444	11th st	7th ave	N	3	N
PR_445	13th st	7th ave	S	3	N
PR_446	13th st	7th ave	S	3	N
PR_447	13th st	7th ave	N	3	N
PR_448	15th st	7th ave	S	3	N
PR_449	15th st	7th ave	S	4	N
PR_450	11th st	6th ave	NE	3	N
PR_451	10th st	6th ave	W	3	N
PR_452	6th ave	10th st	E	3	N
PR_453	6th ave	10th st	E	3	N
PR_454	6th ave	10th st	W	3	N
PR_455	10th st	6th ave	S	4	N
PR_456	6th ave	9th st	W	3	N
PR_457	9th st	6th ave	S	3	N
PR_458	9th st	6th ave	N	3	N
PR_459	6th ave	9th st	W	3	N
PR_460	6th ave	9th st	E	3	N
PR_461	9th st	6th ave	N	3	N
PR_462	6th ave	9th st	NE	3	N
PR_463	9th st	6th ave	NW	3	N

UID	Outlet Road	Intersection	Quad.	Cond.	Compliance
PR_464	6th ave	8th st	W	3	N
PR_465	8th st	6th ave	S	3	N
PR_466	8th st	6th ave	N	3	N
PR_467	6th ave	8th st	W	3	N
PR_468	6th ave	8th st	NE	3	N
PR_469	8th st	6th ave	N	3	N
PR_470	8th st	6th ave	S	3	N
PR_471	6th ave	8th st	SE	3	N
PR_472	6th ave	7th st	SW	3	N
PR_473	7th st	6th ave	S	3	N
PR_474	7th at	6th ave	N	3	N
PR_475	6th ave	7th st	NW	3	N
PR_476	6th ave	7th st	NE	3	N
PR_477	7th st	6th ave	N	3	N
PR_478	7th st	6th ave	S	3	N
PR_479	6th ave	7th st	SE	3	N
PR_480	6th ave	6th st	SW	3	N
PR_481	6th st	6th ave	S	3	N
PR_482	6th st	6th ave	N	3	N
PR_483	6th ave	6th st	NW	3	N
PR_484	6th ave	6th st	E	3	N
PR_485	6th st	6th ave	N	3	N
PR_486	6th st	6th ave	S	3	N
PR_487	6th ave	6th st	E	3	N
PR_488	6th ave	5th st	NW	2	N
PR_489	5th st	6th ave	N	2	N
PR_490	5th st	6th ave	S	2	N
PR_491	6th ave	5th st	SW	2	N
PR_492	6th ave	5th st	E	2	N
PR_493	5th st	6th ave	S	2	N
PR_494	5th st	6th ave	N	2	N
PR_495	6th ave	5th st	E	2	N
PR_496	6th ave	4th st	SW	3	N
PR_497	4th st	6th ave	NE	3	N
PR_498	6th ave	4th st	SE	3	N
PR_499	4th st	6th ave	SW	3	N
PR_500	3rd st	6th ave	NE	3	N
PR_501	3rd st	6th ave	NW	3	N
PR_502	3rd st	5th ave	NW	3	N
PR_503	3rd st	5th ave	NE	3	N

UID	Outlet Road	Intersection	Quad.	Cond.	Compliance
PR_504	4th st	5th ave	NE	3	N
PR_505	4th st	5th ave	SE	3	N
PR_506	4th st	5th ave	SW	3	N
PR_507	4th st	5th ave	NW	3	N
PR_508	5th ave	5th st	E	3	N
PR_509	5th st	5th ave	N	2	N
PR_510	5th st	5th ave	SE	2	N
PR_511	5th ave	5th st	E	2	N
PR_512	5th ave	5th st	W	2	N
PR_513	5th st	5th ave	SW	2	N
PR_514	5th st	5th ave	N	2	N
PR_515	5th ave	5th st	W	2	N
PR_516	5th ave	5th st	E	3	N
PR_517	6th st	5th ave	N	3	N
PR_518	6th st	5th ave	S	3	N
PR_519	5th ave	6th st	SE	3	N
PR_520	6th st	5th ave	SW	3	N
PR_521	6th st	5th ave	N	3	N
PR_522	6th st	5th ave	W	3	N
PR_523	5th ave	7th st	E	3	N
PR_524	7th st	5th ave	N	3	N
PR_525	5th ave	7th st	W	3	N
PR_526	7th st	5th ave	N	3	N
PR_527	7th st	5th ave	SW	3	N
PR_528	5th ave	7th st	W	3	N
PR_529	5th ave	7th st	E	3	N
PR_530	5th ave	7th st	S	3	N
PR_531	8th st	5th ave	NE	2	N
PR_532	8th st	5th ave	SE	2	N
PR_533	8th st	5th ave	SW	2	N
PR_534	8th st	5th ave	NW	2	N
PR_535	5th ave	9th st	E	3	N
PR_536	9th st	5th ave	N	3	N
PR_537	9th st	5th ave	S	3	N
PR_538	5th ave	9th st	E	3	N
PR_539	5th ave	9th st	W	3	N
PR_540	9th st	5th ave	S	3	N
PR_541	5th ave	9th st	NW	3	N
PR_542	5th ave	10th st	E	3	N
PR_543	10th st	5th ave	S	4	N

UID	Outlet Road	Intersection	Quad.	Cond.	Compliance
PR_544	5th ave	10th st	E	3	N
PR_545	5th ave	10th st	W	3	N
PR_546	4th ave	10th st	E	3	N
PR_547	10th st	4th ave	S	3	N
PR_548	4th ave	9th st	E	3	N
PR_549	4th ave	9th st	E	3	N
PR_550	9th st	4th ave	N	3	N
PR_551	4th ave	9th st	E	3	N
PR_552	4th ave	9th st	W	3	N
PR_553	4th ave	8th st	W	3	N
PR_554	8th st	4th ave	S	3	N
PR_555	8th st	4th ave	N	3	N
PR_556	4th ave	9th st	W	3	N
PR_557	8th st	4th ave	NE	2	N
PR_558	4th ave	8th st	SE	2	N
PR_559	4th ave	7th st	E	3	N
PR_560	7th st	4th ave	S	3	N
PR_561	7th st	4th ave	N	3	N
PR_562	4th ave	7th st	W	3	N
PR_563	4th ave	7th st	E	3	N
PR_564	7th st	4th ave	N	3	N
PR_565	7th st	4th ave	S	3	N
PR_566	4th ave	7th st	E	3	N
PR_567	4th ave	6th st	SW	1	Y
PR_568	3th ave	6th st	E	3	N
PR_569	6th st	4th ave	N	3	N
PR_570	4th ave	6th st	E	3	N
PR_571	4th ave	6th st	W	1	Y
PR_572	6th st	4th ave	N	1	Y
PR_573	5th st	4th ave	SE	2	N
PR_574	5th st	4th ave	NW	2	N
PR_575	4th ave	5th st	NE	2	N
PR_576	4th ave	5th st	SE	2	N
PR_577	4th ave	4th st	SW	3	N
PR_578	4th st	4th ave	NE	3	N
PR_579	4th st	4th ave	NW	3	N
PR_580	4th st	4th ave	SE	3	N
PR_581	3rd st	4th ave	NW	3	N
PR_582	3rd st	4th ave	NE	3	N
PR_583	3rd ave	3rd st	NE	3	N

UID	Outlet Road	Intersection	Quad.	Cond.	Compliance
PR_584	3rd st	3rd ave	NW	3	N
PR_585	3rd st	2nd ave	NE	3	N
PR_586	4th st	2nd ave	SE	3	N
PR_587	4th st	3rd ave	SW	3	N
PR_588	4th st	3rd ave	NW	3	N
PR_589	4th st	3rd ave	NE	3	N
PR_590	4th st	3rd ave	SE	3	N
PR_591	3rd ave	5th st	SE	3	N
PR_592	5th st	3rd ave	NE	3	N
PR_593	5th st	3rd ave	N	3	N
PR_594	5th st	3rd ave	SW	3	N
PR_595	6th st	3rd ave	NE	3	N
PR_596	6th st	3rd ave	N	3	N
PR_597	6th st	3rd ave	S	3	N
PR_598	3rd ave	6th st	E	3	N
PR_599	5th st	10th ave	N	2	N
PR_600	10th ave	5th st	W	2	N
PR_601	10th ave	5th st	E	2	N
PR_602	5th st	10th ave	N	2	N
PR_603	10th ave	6th st	NE	3	N
PR_604	6th st	10th ave	N	3	N
PR_605	6th st	10th ave	S	3	N
PR_606	10th ave	6th st	W	3	N
PR_607	10th ave	6th st	W	3	N
PR_608	6th st	10th ave	S	3	N
PR_609	6th st	10th ave	N	3	N
PR_610	10th ave	7th st	E	3	N
PR_611	10th ave	7th st	N	3	N
PR_612	7th st	10th ave	S	3	N
PR_613	10th ave	7th st	E	3	N
PR_614	10th ave	7th st	W	3	N
PR_615	7th st	10th ave	S	3	N
PR_616	7th st	10th ave	N	3	N
PR_617	10th ave	7th st	W	3	N
PR_618	10th ave	8th st	E	3	N
PR_619	8th st	10th ave	N	3	N
PR_620	8th st	10th ave	S	3	N
PR_621	10th ave	8th st	E	3	N
PR_622	10th ave	8th st	W	3	N
PR_623	8th st	10th ave	S	3	N

UID	Outlet Road	Intersection	Quad.	Cond.	Compliance
PR_624	8th st	10th ave	N	3	N
PR_625	10th ave	9th st	E	3	N
PR_626	10th ave	9th st	W	3	N
PR_627	9th st	10th ave	S	3	N
PR_628	10th ave	9th st	W	3	N
PR_629	10th ave	9th st	E	3	N
PR_630	9th st	10th ave	S	3	N
PR_631	10th st	10th ave	E	3	N
PR_632	10th ave	10th st	W	3	N
PR_633	10th st	10th ave	N	3	N
PR_634	10th st	10th ave	S	3	N
PR_635	10th ave	10th st	W	3	N
PR_636	10th ave	10th st	E	3	N
PR_637	11th st	8th ave	N	3	N
PR_638	8th ave	13th st	E	3	N
PR_639	11th ave	10th st	E	3	N
PR_640	11th ave	10th st	E	3	N
PR_641	11th ave	10th st	W	3	N
PR_642	10th st	11th ave	S	4	N
PR_643	11th ave	10th st	W	3	N
PR_644	11th ave	9th st	S	3	N
PR_645	11th ave	9th st	NW	3	N
PR_646	11th ave	9th st	E	2	N
PR_647	11th ave	9th st	E	2	N
PR_648	11th ave	8th st	SW	3	N
PR_649	8th st	11th ave	NW	3	N
PR_650	11th ave	8th st	E	3	N
PR_651	8th st	11th ave	S	3	N
PR_652	7th st	11th ave	SW	3	N
PR_653	7th st	11th ave	W	3	N
PR_654	11th ave	7th st	E	3	N
PR_655	11th ave	7th st	E	3	N
PR_656	11th ave	6th st	SW	3	N
PR_657	6th st	11th ave	W	3	N
PR_658	11th ave	6th st	E	3	N
PR_659	11th ave	6th st	E	3	N
PR_660	11th ave	5th st	W	2	N
PR_661	11th ave	5th st	W	2	N
PR_662	11th ave	3rd st	E	3	N
PR_663	12th ave	3rd st	E	3	N

UID	Outlet Road	Intersection	Quad.	Cond.	Compliance
PR_664	6th st	12th ave	SE	2	N
PR_665	12th ave	6th st	E	3	N
PR_666	12th ave	6th st	W	3	N
PR_667	12th ave	6th st	W	3	N
PR_668	12th ave	7th st	W	3	N
PR_669	12th ave	7th st	E	3	N
PR_670	13th ave	6th st	W	3	N
PR_671	13th ave	9th st	W	2	N
PR_672	13th ave	9th st	E	2	N
PR_673	13th ave	9th st	S	2	N
PR_674	9th st	13th ave	N	2	N
PR_675	13th ave	10th st	W	2	N
PR_676	13th ave	10th st	W	2	N
PR_677	home ln	14th ave	S	3	N
PR_678	14th ave	home ln	NW	3	N
PR_679	5th st	10th ave	S	2	N
PR_680	valley pine circle	hwy 71/11 frontage road	SW	3	N

PEDESTRIAN SIGNALS

UID	Intersection	Quadrant	Condition	Compliance
PS_01	th 53 and 17th st	SW	3	N
PS_02	th 53 and 17th st	SE	3	N
PS_03	17th st and th 53	NE	3	N
PS_04	17th st and th 53	NW	3	N
PS_05	6th ave w	NW	4	N
PS_06	3rd ave and 3rd sf	N	3	N
PS_07	3rd ave w and 3rd st	N	3	N
PS_08	6th ave w and 3rd st	NE	3	N
PS_09	11th st and th 53	SE	3	N
PS_10	11th st and th 53	NE	3	N
PS_11	11th st	NW	4	N
PS_12	7th st and th 53	SW	4	N
PS_13	7th st	NW	3	N
PS_14	7th st	NE	3	N
PS_15	7th st and th 53	SE	3	N
PS_16	11th st and th 53	SW	3	N
PS_17	3rd st and 6th ave	S	3	N
PS_18	3rd st and 6th ave	S	3	N
PS_19	3rd st and 3rd ave	W	3	N
PS_20	3rd st and 3rd ave	E	3	N
PS_21	4th st and 3rd ave	SW	3	N
PS_22	3rd ave and 4th st	SW	3	N
PS_23	4th st and 3rd ave	S	3	N
PS_24	4th st and 3rd ave	NW	3	N

APPENDIX B – SCHEDULE / BUDGET INFORMATION

COST INFORMATION

UNIT PRICES

Construction costs for upgrading facilities can vary depending on each individual improvement and conditions of each site. Costs can also vary on the type and size of project the improvements are associated with. Listed below are representative 2018 costs for some typical accessibility improvements based on if the improvements are included as part of a retrofit type project, or as part of a larger comprehensive capital improvement project.

Intersection corner ADA improvement retrofit: +/- \$4,000 per ramp

Traffic control signal APS upgrade retrofit: +/- \$ 10,000 per signal leg

Sidewalk / Trail ADA improvement retrofit: +/- \$10.00 per SF

IMPROVEMENT COST

Reconstruct 675 pedestrian ramps:	\$2,700,000
Traffic control signal APS upgrades (only 8 of which are City's):	\$240,000
Sidewalk / Trail ADA improvement retrofit (SF):	\$8,495,992
Total:	\$11,435,992

ENTIRE JURISDICTION

Based on the results of the self-evaluation, the estimated costs associated with providing ADA accessibility within the entire jurisdiction is \$11,435,992 regardless of responsible authority. This amount signifies a significant investment that the City of International Falls is committed to making in the upcoming years with the assistance of other responsible agencies where applicable. A systematic approach to providing accessibility will be taken in order to absorb the cost into the City budget for improvements to the public right of way.

APPENDIX C – PUBLIC OUTREACH

Insert Summary of Public Outreach here:

APPENDIX D – GRIEVANCE PROCEDURE

As part of the ADA requirements the City has posted the following notice outlining its ADA requirements:

PUBLIC NOTICE

In accordance with the requirements of title II of the Americans with Disabilities Act of 1990, the City of International Falls will not discriminate against qualified individuals with disabilities on the basis of disability in the City's services, programs, or activities.

Employment: The City does not discriminate on the basis of disability in its hiring or employment practices and complies with all regulations promulgated by the U.S. Equal Employment Opportunity Commission under title I of the Americans with Disabilities Act (ADA).

Effective Communication: The City will generally, upon request, provide appropriate aids and services leading to effective communication for qualified persons with disabilities so they can participate equally in the City's programs, services, and activities, including qualified sign language interpreters, documents in Braille, and other ways of making information and communications accessible to people who have speech, hearing, or vision impairments.

Modifications to Policies and Procedures: The City will make all reasonable modifications to policies and programs to ensure that people with disabilities have an equal opportunity to enjoy all City programs, services, and activities. For example, individuals with service animals are welcomed in City offices, even where pets are generally prohibited.

Anyone who requires an auxiliary aid or service for effective communication, or a modification of policies or procedures to participate in a City program, service, or activity, should contact the office of the ADA Coordinator, as soon as possible but no later than 48 hours before the scheduled event.

The ADA does not require the City to take any action that would fundamentally alter the nature of its programs or services, or impose an undue financial or administrative burden.

The City will not place a surcharge on a particular individual with a disability or any group of individuals with disabilities to cover the cost of providing auxiliary aids/services or reasonable modifications of policy, such as retrieving items from locations that are open to the public but are not accessible to persons who use wheelchairs.

City of International Falls, MN Grievance Procedure under the Americans with Disabilities Act

This Grievance Procedure is established to meet the requirements of the Americans with Disabilities Act of 1990 ("ADA"). It may be used by anyone who wishes to file a complaint alleging discrimination on the basis of disability in the provision of services, activities, programs, or benefits by the City of International Falls. The City's Personnel Policy governs employment-related complaints of disability discrimination.

The complaint should be in writing and contain information about the alleged discrimination such as name, address, phone number of complainant and location, date, and description of the problem. Alternative means of filing complaints, such as personal interviews or a tape recording of the complaint, will be made available for persons with disabilities upon request.

The complaint should be submitted by the grievant and/or his/her designee as soon as possible but no later than 60 calendar days after the alleged violation to:

International Falls City Administrator

Contact info: <https://www.ci.international-falls.mn.us/resources/staff-directory/>

The City will acknowledge receipt of the grievance to the complainant within 15 working days of its submittal. The City will also provide to the complainant within 15 working days of its submittal; 1) a response or resolution to the grievance or; 2) information on when the complainant can expect a response or resolution to the grievance.

If the grievance filed does not concern a City facility, the City will work with the complainant to contact the agency that has jurisdiction.

Within 60 calendar days of receipt, a City of International Falls staff person will conduct an investigation necessary to determine the validity of the alleged violation. As a part of the investigation, the staff person would conduct an engineering study to help determine the City's response. The staff person will take advantage of department resources and use engineering judgment, data collected, and any information submitted by the resident to develop a conclusion. A staff person will be available to meet with the complainant to discuss the matter as a part of the investigation and resolution of the matter. The City will document each resolution of a filed grievance and retain such documentation in the department's ADA Grievance File for a period of seven years.

The City will consider all specific grievances within its particular context or setting. Furthermore, the City will consider many varying circumstances including: 1) the nature of the access to services, programs, or facilities at issue; 2) the specific nature of the disability; 3) the essential eligibility requirements for participation; 4) the health and safety of others; and 5) the degree to which an accommodation would constitute a fundamental alteration to the program, service, or facility, or cause an undue hardship to The City of International Falls.

Accordingly, the resolution by the City of any one grievance does not constitute a precedent upon which the City is bound or upon which other complaining parties may rely.

File Maintenance

The City shall maintain ADA grievance files for a period of seven years.

Complaints of Title II violations may also be filed with the DOJ within 180 days of the date of discrimination. In certain situations, cases may be referred to a mediation program sponsored by the Department of Justice (DOJ). The DOJ may bring a lawsuit where it has investigated a matter and has been unable to resolve violations.

For more information, contact:

U.S. Department of Justice
Civil Rights Division
950 Pennsylvania Avenue, N.W.
Disability Rights Section - NYAV
Washington, D.C. 20530

www.ada.gov

(800) 514-0301 (voice – toll free)

(800) 514-0383 (TTY)

Title II may also be enforced through private lawsuits in Federal court. It is not necessary to file a complaint with the DOJ or any other Federal agency, or to receive a "right-to-sue" letter, before going to court.

APPENDIX E – CONTACT INFORMATION

ADA TITLE II COORDINATOR

Job Title: City Administrator

See link below for contact information.

<https://www.ci.international-falls.mn.us/resources/staff-directory/>

PUBLIC RIGHT OF WAYS ADA IMPLEMENTATION COORDINATOR

Job Title: Public Works Director

See link below for contact information.

<https://www.ci.international-falls.mn.us/resources/staff-directory/>

APPENDIX F – AGENCY ADA DESIGN STANDARDS AND PROCEDURES

DESIGN PROCEDURES

INTERSECTION CORNERS

Curb ramps or blended transitions will attempt to be constructed or upgraded to achieve compliance within all capital improvement projects. There may be limitations which make it technically infeasible for an intersection corner to achieve full accessibility within the scope of any project. Those limitations will be noted and those intersection corners will remain on the transition plan. As future projects or opportunities arise, those intersection corners shall continue to be incorporated into future work. Regardless on if full compliance can be achieved or not, each intersection corner shall be made as compliant as possible in accordance with the judgment of City staff.

SIDEWALKS / TRAILS

Sidewalks and trails will attempt to be constructed or upgraded to achieve compliance within all capital improvement projects. There may be limitations which make it technically infeasible for segments of sidewalks or trails to achieve full accessibility within the scope of any project. Those limitations will be noted and those segments will remain on the transition plan. As future projects or opportunities arise, those segments shall continue to be incorporated into future work. Regardless on if full compliance can be achieved or not, every sidewalk or trail shall be made as compliant as possible in accordance with the judgment of City staff.

TRAFFIC CONTROL SIGNALS

Traffic control signals will attempt to be constructed or upgraded to achieve compliance within all capital improvement projects. There may be limitations which make it technically infeasible for individual traffic control signal locations to achieve full accessibility within the scope of any project. Those limitations will be noted and those locations will remain on the transition plan. As future projects or opportunities arise, those locations shall continue to be incorporated into future work. Regardless on if full compliance can be achieved or not, each traffic signal control location shall be made as compliant as possible in accordance with the judgment of City staff.

OTHER POLICIES, PRACTICES AND PROGRAMS

Policies, practices and programs not identified in this document will follow the applicable ADA standards.

DESIGN STANDARDS

The City of International Falls has PROWAG, as adopted by the Minnesota Department of Transportation (MnDOT), as its design standard. A copy of this document can be found at:

<http://www.dot.state.mn.us/ada/design.html>.

APPENDIX G – GLOSSARY OF TERMS

ABA: See Architectural Barriers Act.

ADA: See Americans with Disabilities Act.

ADA Transition Plan: Mn/DOT's transportation system plan that identifies accessibility needs, the process to fully integrate accessibility improvements into the Statewide Transportation Improvement Program (STIP), and ensures all transportation facilities, services, programs, and activities are accessible to all individuals.

ADAAG: See Americans with Disabilities Act Accessibility Guidelines.

Accessible: A facility that provides access to people with disabilities using the design requirements of the ADA.

Accessible Pedestrian Signal (APS): A device that communicates information about the WALK phase in audible and vibrotactile formats.

Alteration: A change to a facility in the public right-of-way that affects or could affect access, circulation, or use. An alteration must not decrease or have the effect of decreasing the accessibility of a facility or an accessible connection to an adjacent building or site.

Americans with Disabilities Act (ADA): The Americans with Disabilities Act; Civil rights legislation passed in 1990 and effective July 1992. The ADA sets design guidelines for accessibility to public facilities, including sidewalks and trails, by individuals with disabilities.

Americans with Disabilities Act Accessibility Guidelines (ADAAG): contains scoping and technical requirements for accessibility to buildings and public facilities by individuals with disabilities under the Americans with Disabilities Act (ADA) of 1990.

APS: See Accessible Pedestrian Signal.

Architectural Barriers Act (ABA): Federal law that requires facilities designed, built, altered or leased with Federal funds to be accessible. The Architectural Barriers Act marks one of the first efforts to ensure access to the built environment.

Capital Improvement Program (CIP): The CIP for the Transportation Department includes an annual capital budget and a five-year plan for funding the new construction and reconstruction projects on the county's transportation system.

Detectable Warning: A surface feature of truncated domes, built in or applied to the walking surface to indicate an upcoming change from pedestrian to vehicular way.

DOJ: See United States Department of Justice

Federal Highway Administration (FHWA): A branch of the US Department of Transportation that administers the federal-aid Highway Program, providing financial assistance to states to construct and improve highways, urban and rural roads, and bridges.

FHWA: See Federal Highway Administration

Pedestrian Access Route (PAR): A continuous and unobstructed walkway within a pedestrian circulation path that provides accessibility.

Pedestrian Circulation Route (PCR): A prepared exterior or interior way of passage provided for pedestrian travel.

PROWAG: An acronym for the *Guidelines for Accessible Public Rights-of-Way* issued in 2005 by the U. S. Access Board. This guidance addresses roadway design practices, slope, and terrain related to pedestrian access to walkways and streets, including crosswalks, curb ramps, street furnishings, pedestrian signals, parking, and other components of public rights-of-way.

Right of Way: A general term denoting land, property, or interest therein, usually in a strip, acquired for the network of streets, sidewalks, and trails creating public pedestrian access within a public entity's jurisdictional limits.

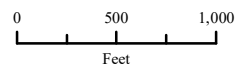
Section 504: The section of the Rehabilitation Act that prohibits discrimination by any program or activity conducted by the federal government.

Uniform Accessibility Standards (UFAS): Accessibility standards that all federal agencies are required to meet; includes scoping and technical specifications.

United States Access Board: An independent federal agency that develops and maintains design criteria for buildings and other improvements, transit vehicles, telecommunications equipment, and electronic and information technology. It also enforces accessibility standards that cover federally funded facilities.

United States Department of Justice (DOJ): The United States Department of Justice (often referred to as the Justice Department or DOJ), is the United States federal executive department responsible for the enforcement of the law and administration of justice.

INTERNATIONAL FALLS ADA COMPREHENSIVE



Signal Compliancy



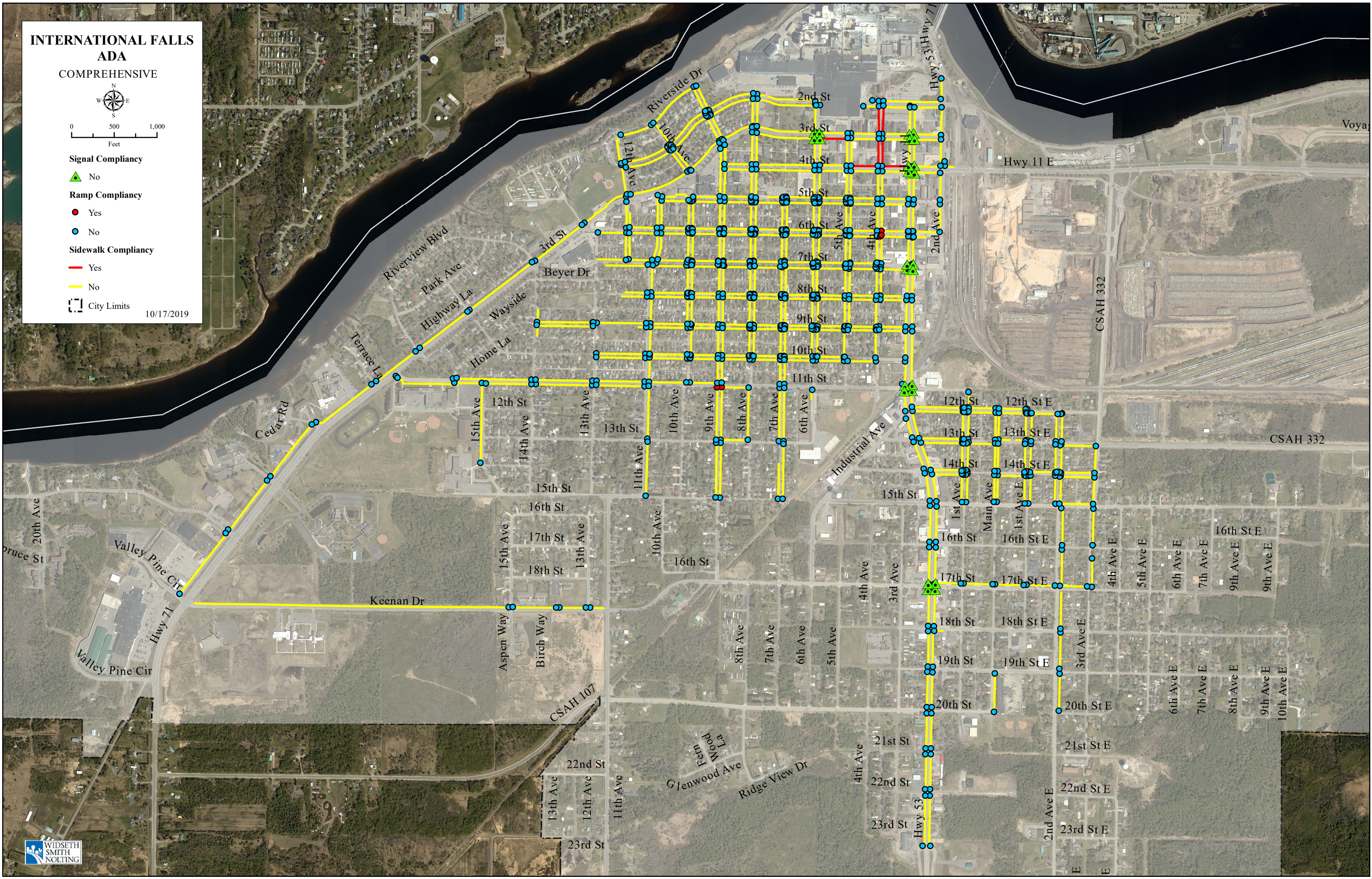
Ramp Compliancy



Sidewalk Compliancy



10/17/2019



INTERNATIONAL FALLS ADA COMPREHENSIVE SECTIONS



0 500 1,000
Feet

Signal Compliancy

▲ No

Ramp Compliancy

● Yes

● No

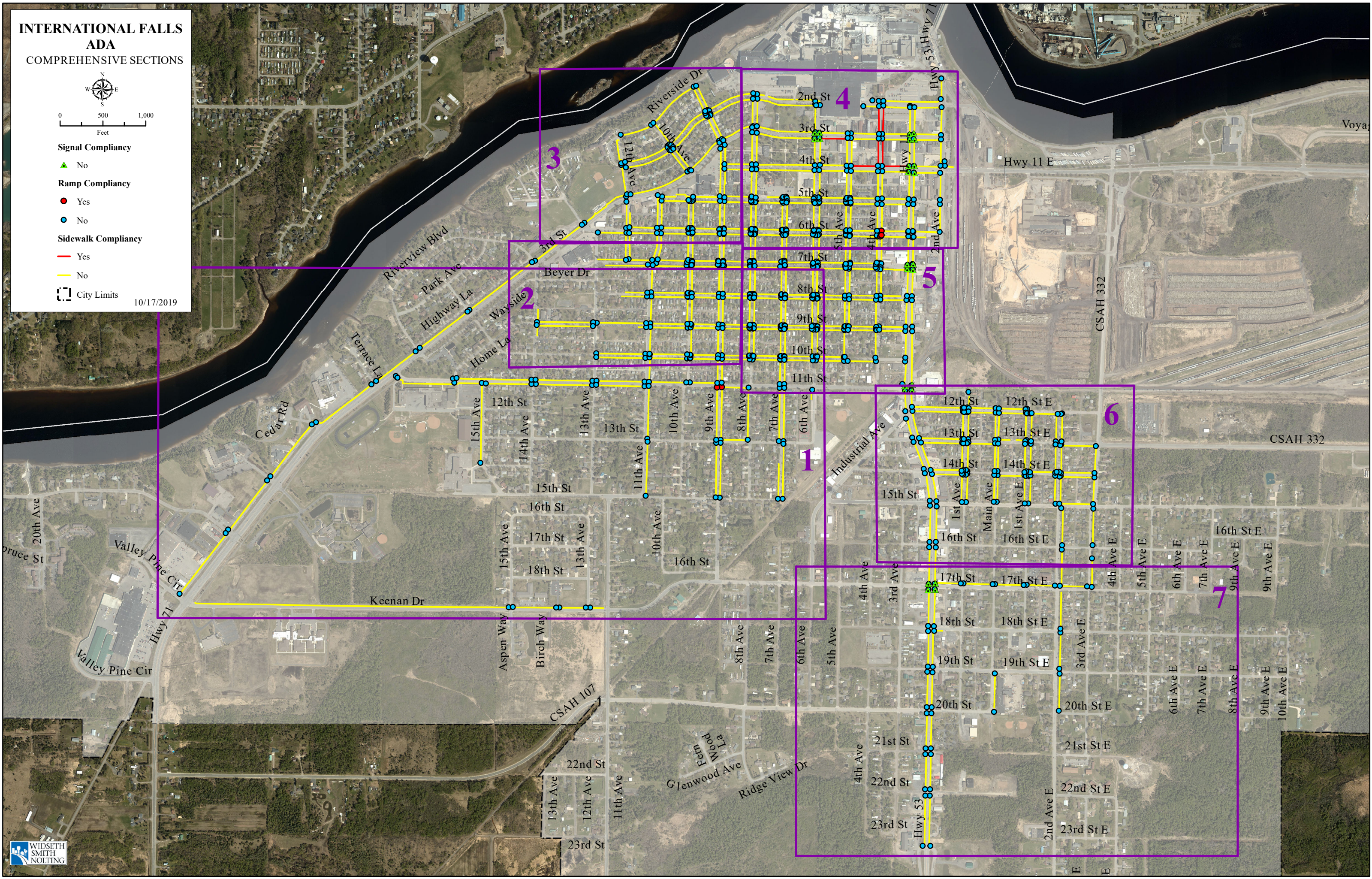
Sidewalk Compliancy

— Yes

— No

□ City Limits

10/17/2019



INTERNATIONAL FALLS
ADA
SECTION 1

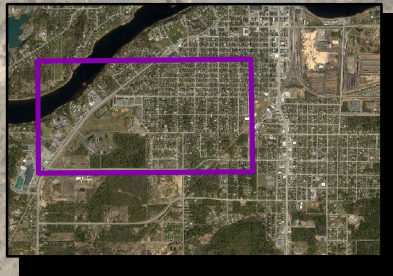
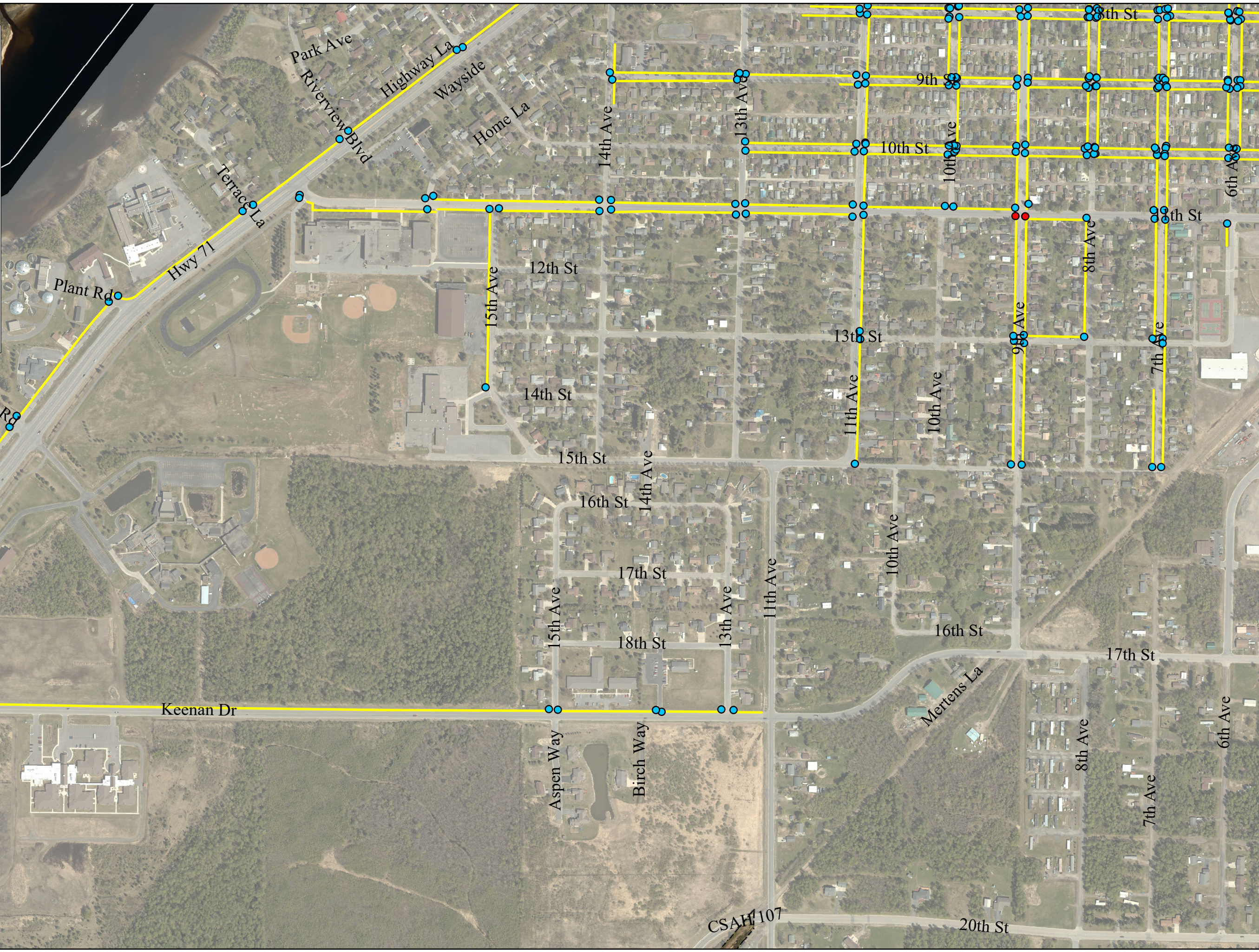
0 250 500
 Feet

Signal Compliancy
 ▲ No

Ramp Compliancy
 ● Yes
 ● No

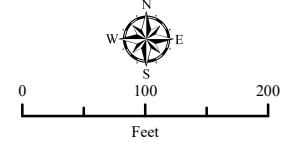
Sidewalk Compliancy
 — Yes
 — No

City Limits 10/17/2019



**INTERNATIONAL FALLS
ADA**

SECTION 2



Signal Compliancy

▲ No

Ramp Compliancy

● Yes

● No

Sidewalk Compliancy

— Yes

— No

IFalls Streets

City Limits

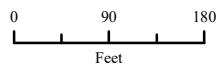
10/17/2019



INTERNATIONAL FALLS

ADA

SECTION 3



Signal Compliancy

▲ No

Ramp Compliancy

● Yes

● No

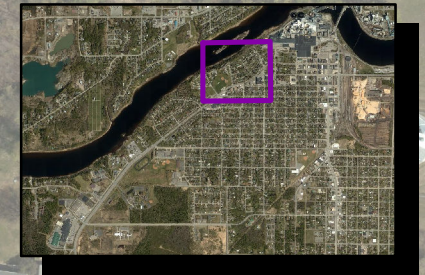
Sidewalk Compliancy

— Yes

— No

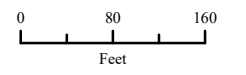
□ City Limits

10/17/2019



**INTERNATIONAL FALLS
ADA**

SECTION 4



Signal Compliance

▲ No

Ramp Compliance

● Yes

● No

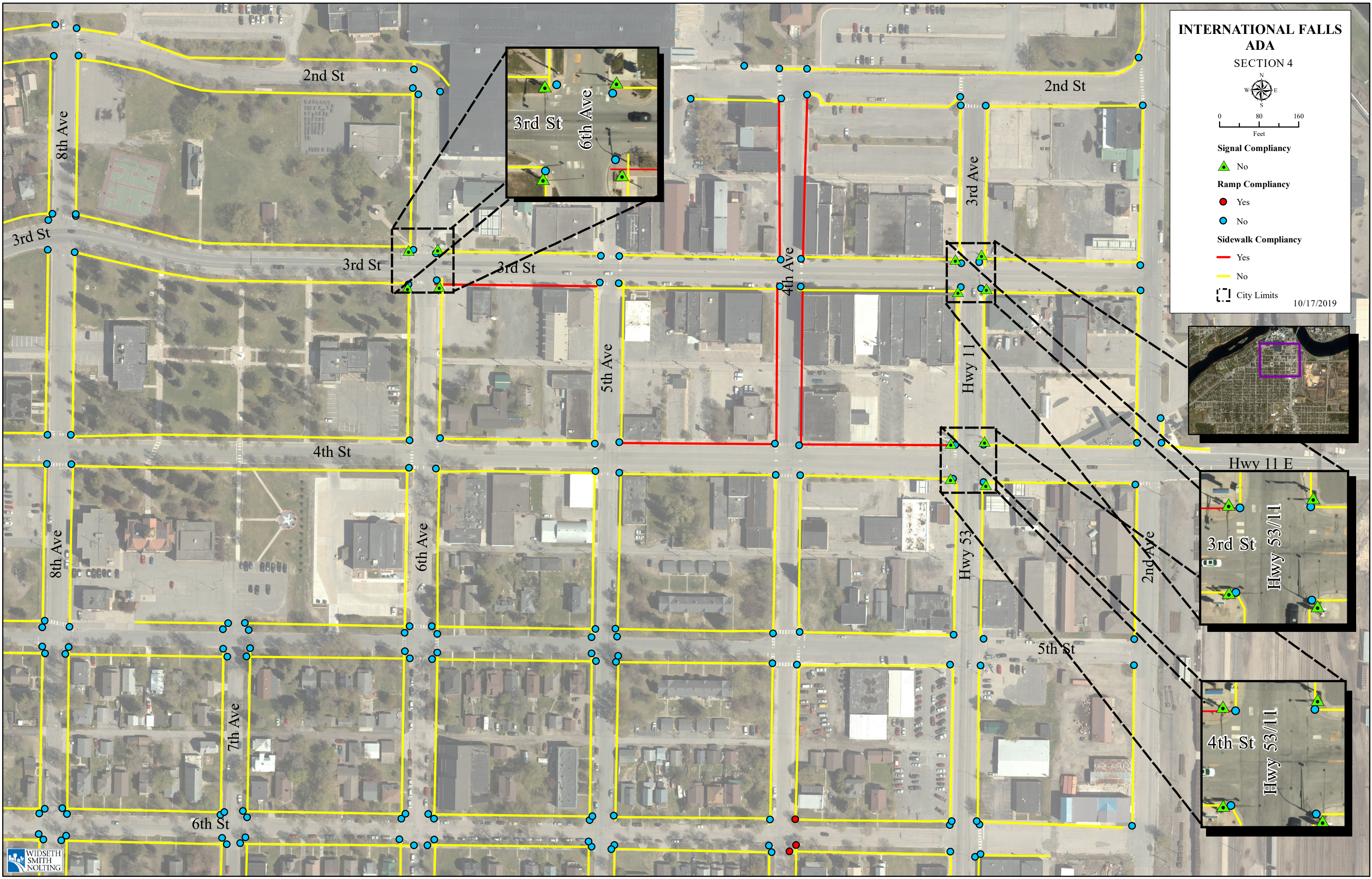
Sidewalk Compliance

— Yes

— No

⬡ City Limits

10/17/2019



**INTERNATIONAL FALLS
ADA
SECTION 5**



0 80 160
Feet

Signal Compliance



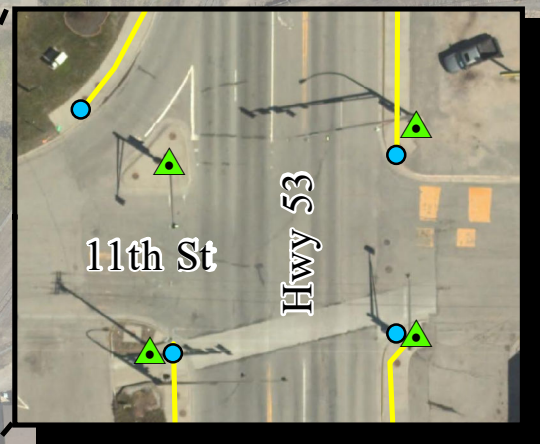
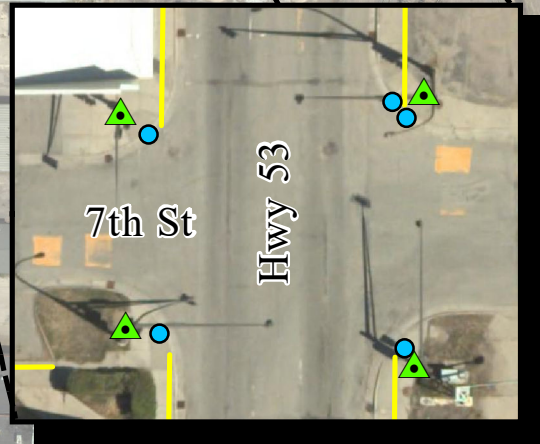
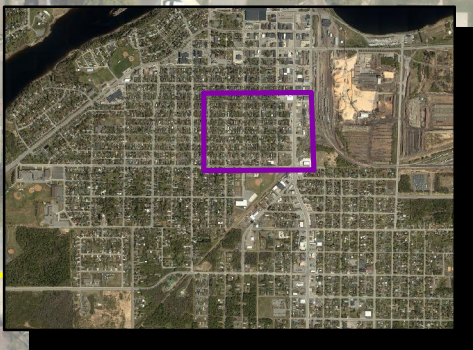
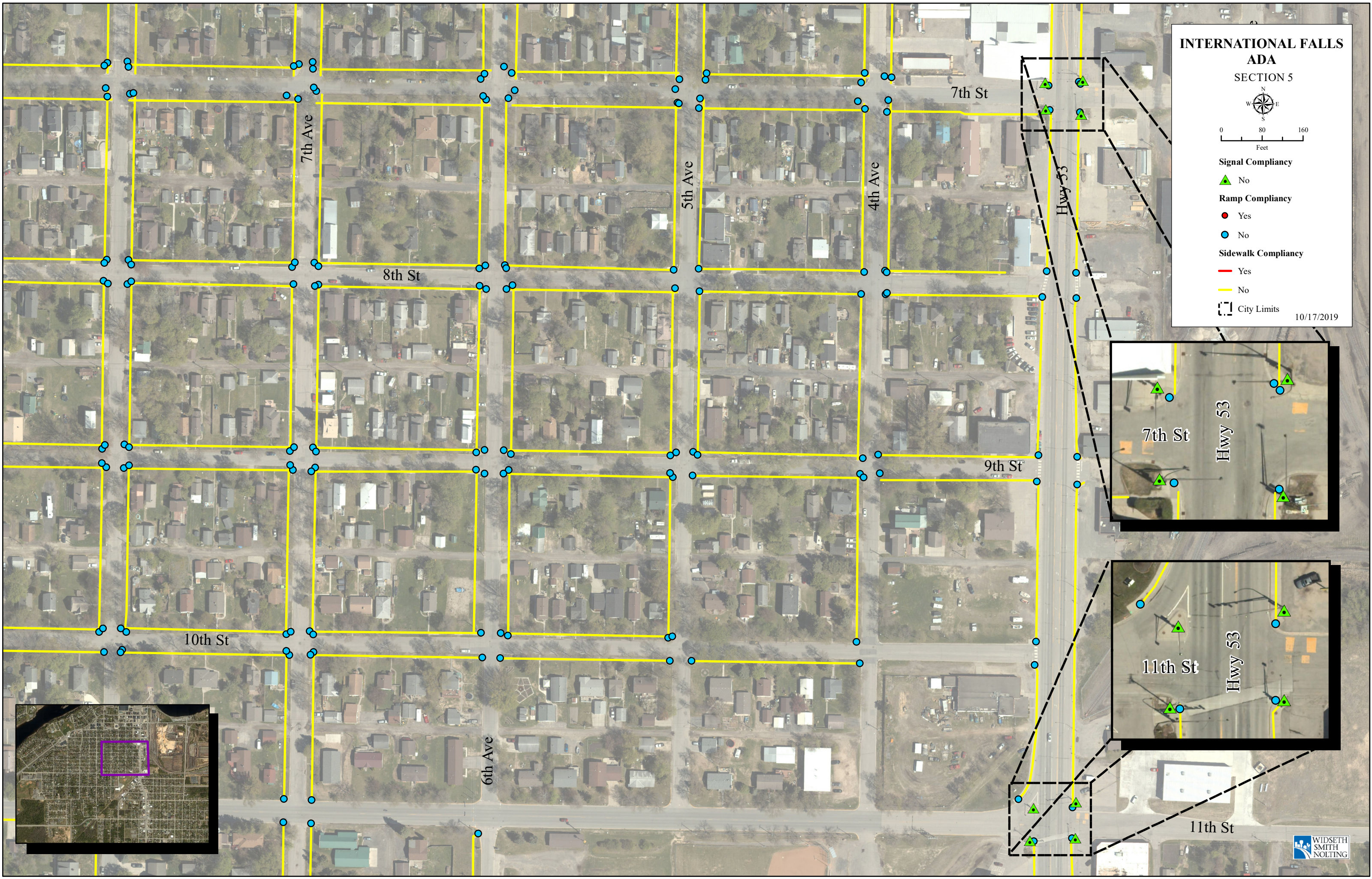
Ramp Compliance



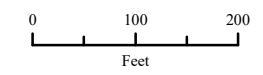
Sidewalk Compliance



10/17/2019



**INTERNATIONAL FALLS
ADA
SECTION 6**



Signal Compliancy

▲ No

Ramp Compliancy

● Yes

● No

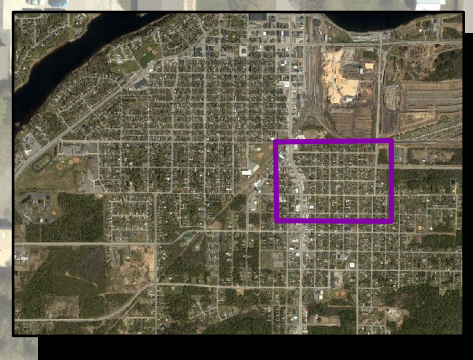
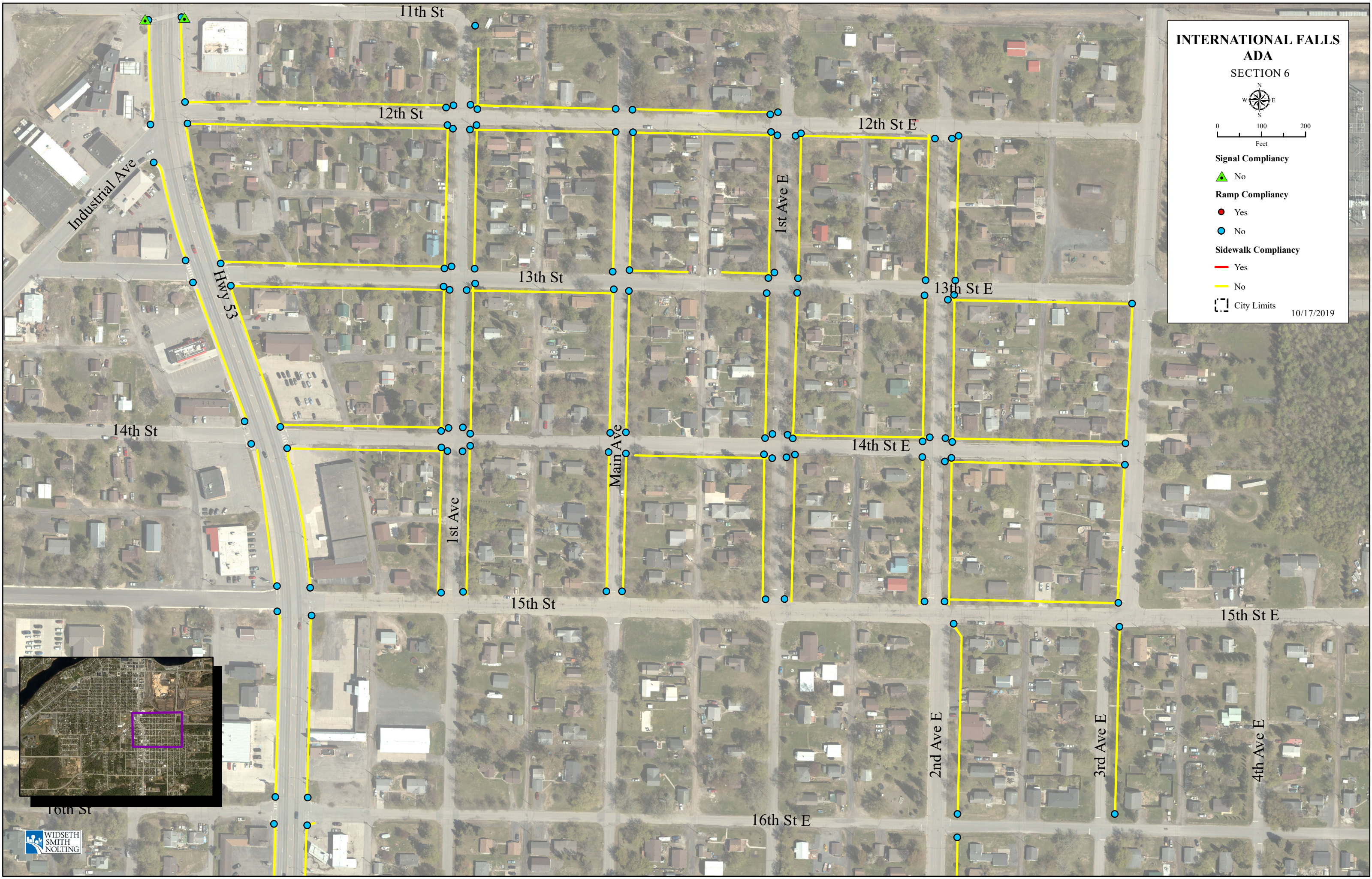
Sidewalk Compliancy

— Yes

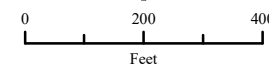
— No

□ City Limits

10/17/2019



INTERNATIONAL FALLS
ADA
SECTION 7



Signal Compliance



No

Ramp Compliance



Yes



No

Sidewalk Compliance



Yes



No

City Limits



10/17/2019

